

STEPHEN MERRELL CLEMENT (1859-1913)



S. M. Clement Jr.

Peter W. Clement 4 Waterbury Avenue Madison, CT 06443
Clement Day July 2011
08-SMC2 Scrapbook

STEPHEN MERRELL CLEMENT (1859-1913)



Detail: Photo CJC/SMCIII Album

Birthplace of Stephen Merrell Clement. Stephen Mallory Clement house, Fredonia, New York, c.1865. Stephen Merrell Clement, who was born in this house, sits on a rocking horse on the right porch, and Henry Clay (1853-1867), his beloved older brother, stands in front of the fence. After about 20 years there, the family moved to Buffalo in 1869, when Stephen Mallory was appointed Cashier of The Marine Bank there. Demolished.

*Stephen (1768-1846)¹, Frederick (1799-1881)², Stephen Mallory (1825-1892)³, Stephen Merrell (1859-1913)⁴,
Norman, Edith, Merrell, Harold, Marion, Stuart⁵*

STEPHEN MERRELL CLEMENT (1859-1913)



SELC Album

*Stephen (1768-1846)¹, Frederick (1799-1881)², Stephen Mallory (1825-1892)³, Stephen Merrell (1859-1913)⁴,
Norman, Edith, Merrell, Harold, Marion, Stuart⁵*

STEPHEN MERRELL CLEMENT (1859-1913)



BECHS

703 Delaware Avenue, similar to Stephen Mallory Clement's first house at 737 Delaware Avenue. The family moved to 737 when the house was completed in 1874; SMC2 was 15.



Peter Clement 1970

173 Summer Street, on the northeast corner of Oakland Place. Built by Stephen Merrell Clement c.1885 as a wedding present for his bride, Carolyn Jewett Tripp Clement. The house was designed by

Edward B. Green, the architect of the then-future 786 Delaware, and the new Marine Bank Headquarters. All but Stuart were born here. The house was later converted to apartments. Norman Clement's later house at one time was directly across Summer Street. The house owner told me, in 1970, that in the late '40's he would frequently hear bustling in the front hall, or drawing room, or even upstairs, and he would find that Norman had "burst in" for a nostalgic look at his childhood home. Extant 2011.

Stephen (1768-1846)¹, Frederick (1799-1881)², Stephen Mallory (1825-1892)³, Stephen Merrell (1859-1913)⁴, Norman, Edith, Merrell, Harold, Marion, Stuart⁵

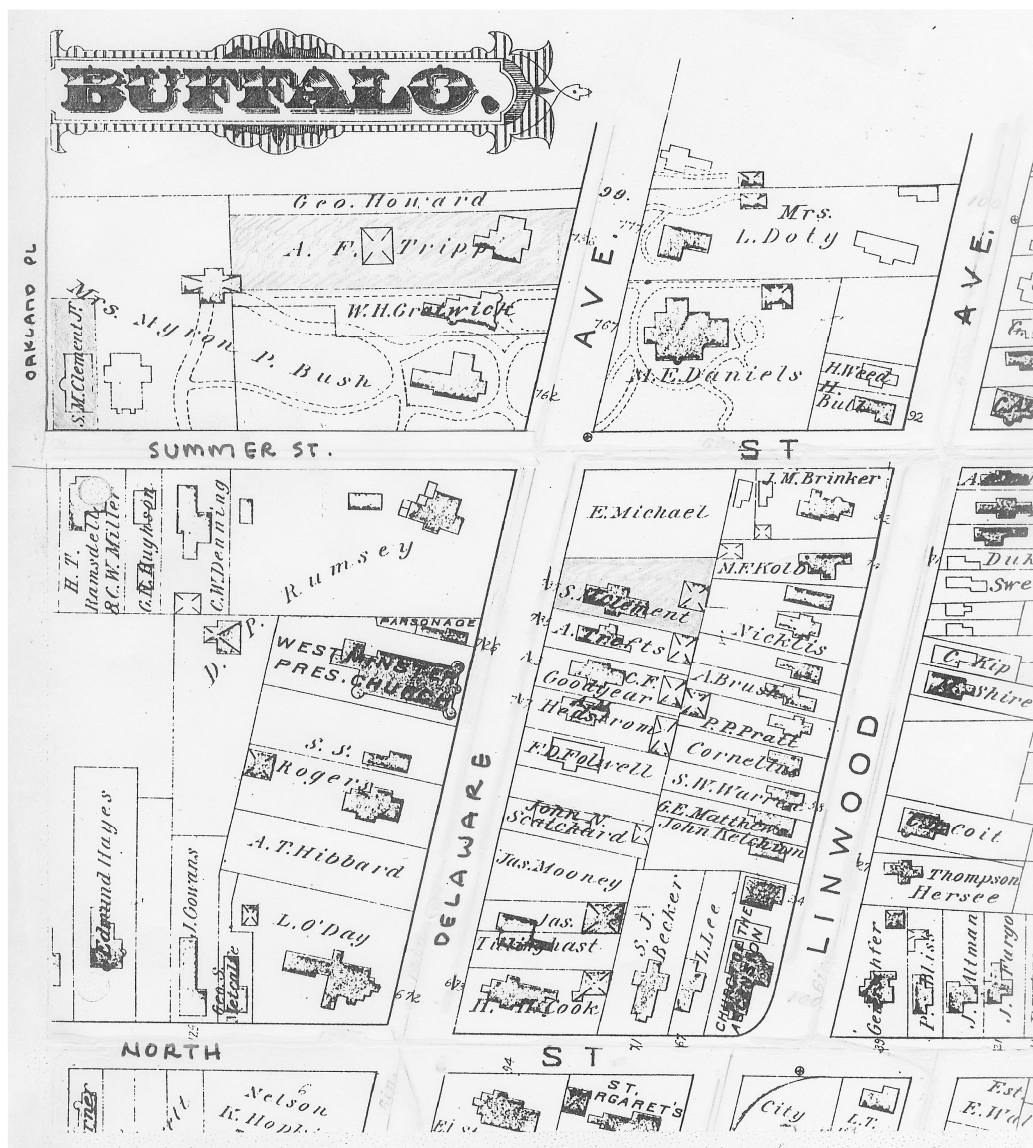
STEPHEN MERRELL CLEMENT (1859-1913)



CTC's Grandchildren's Album

The second 737 Delaware was built by Stephen Mallory Clement, after Stephen Merrell was married to Carolyn Tripp. SMC & CTC lived on Linwood Avenue, then in 173 Summer St., which Stephen built c.1885. When Stephen, Sr. died in 1892, Stephen, Jr. moved to 737. His children grew up in this house.

Stephen (1768-1846)¹, Frederick (1799-1881)², Stephen Mallory (1825-1892)³, Stephen Merrell (1859-1913)⁴, Norman, Edith, Merrell, Harold, Marion, Stuart⁵



S. S. Mitchell

Sanborn Map c.1888

STEPHEN MERRELL CLEMENT (1859-1913)



*Stephen (1768-1846)¹, Frederick (1799-1881)², Stephen Mallory (1825-1892)³, Stephen Merrell (1859-1913)⁴,
Norman, Edith, Merrell, Harold, Marion, Stuart⁵*

STEPHEN MERRELL CLEMENT (1859-1913)



Yale '82 Yearbook



Yale '82 Yearbook

SMC2's Yale dorm room (much tidied). Photo portrait
of SMC1 is on the writing desk

*Stephen (1768-1846)¹, Frederick (1799-1881)², Stephen Mallory (1825-1892)³, Stephen Merrell (1859-1913)⁴,
Norman, Edith, Merrell, Harold, Marion, Stuart⁵*

STEPHEN MERRELL CLEMENT (1859-1913)

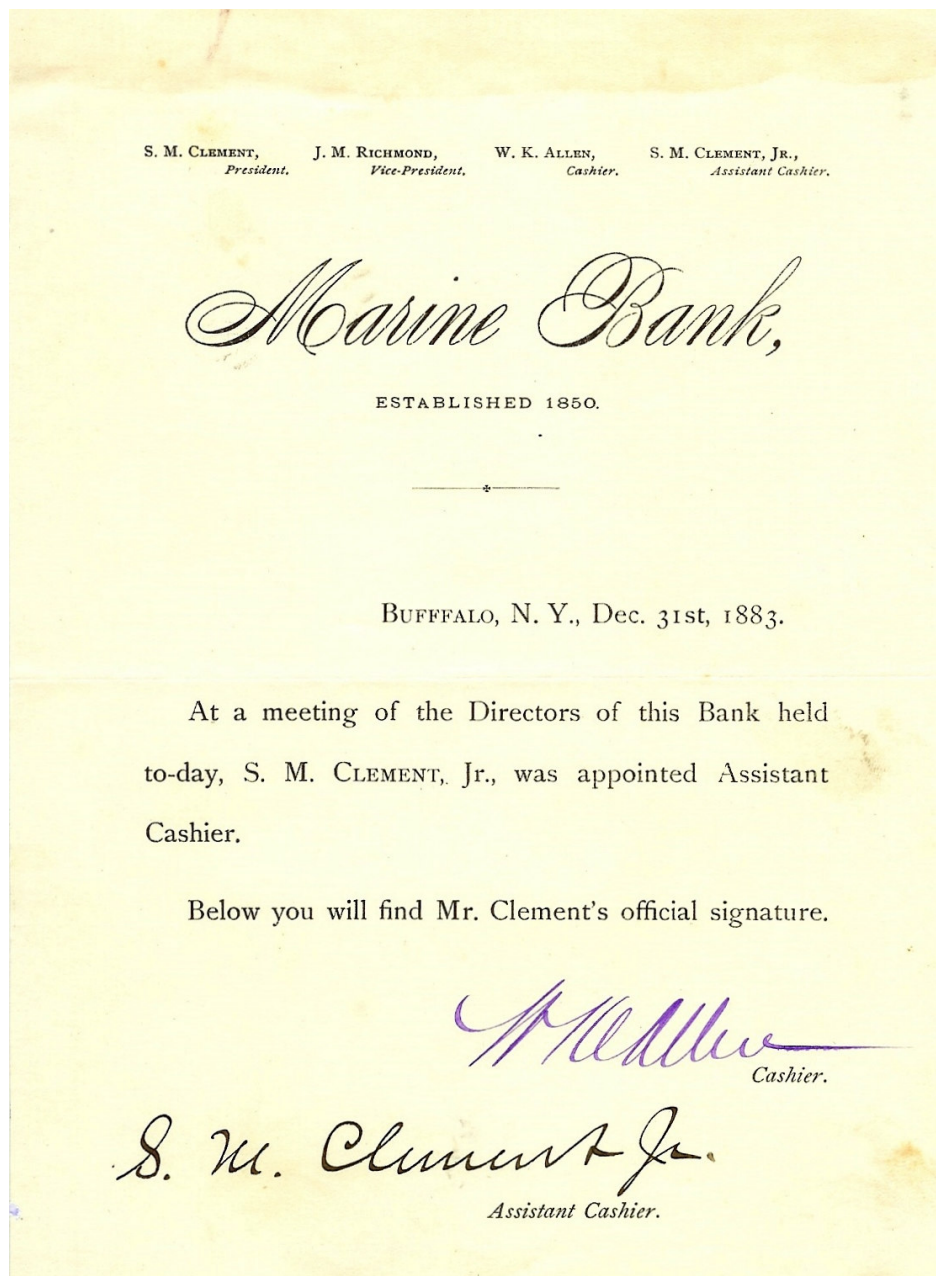


Yale '82 Yearbook

Senior portrait at Yale 1882

*Stephen (1768-1846)¹, Frederick (1799-1881)², Stephen Mallory (1825-1892)³, Stephen Merrell (1859-1913)⁴,
Norman, Edith, Merrell, Harold, Marion, Stuart⁵*

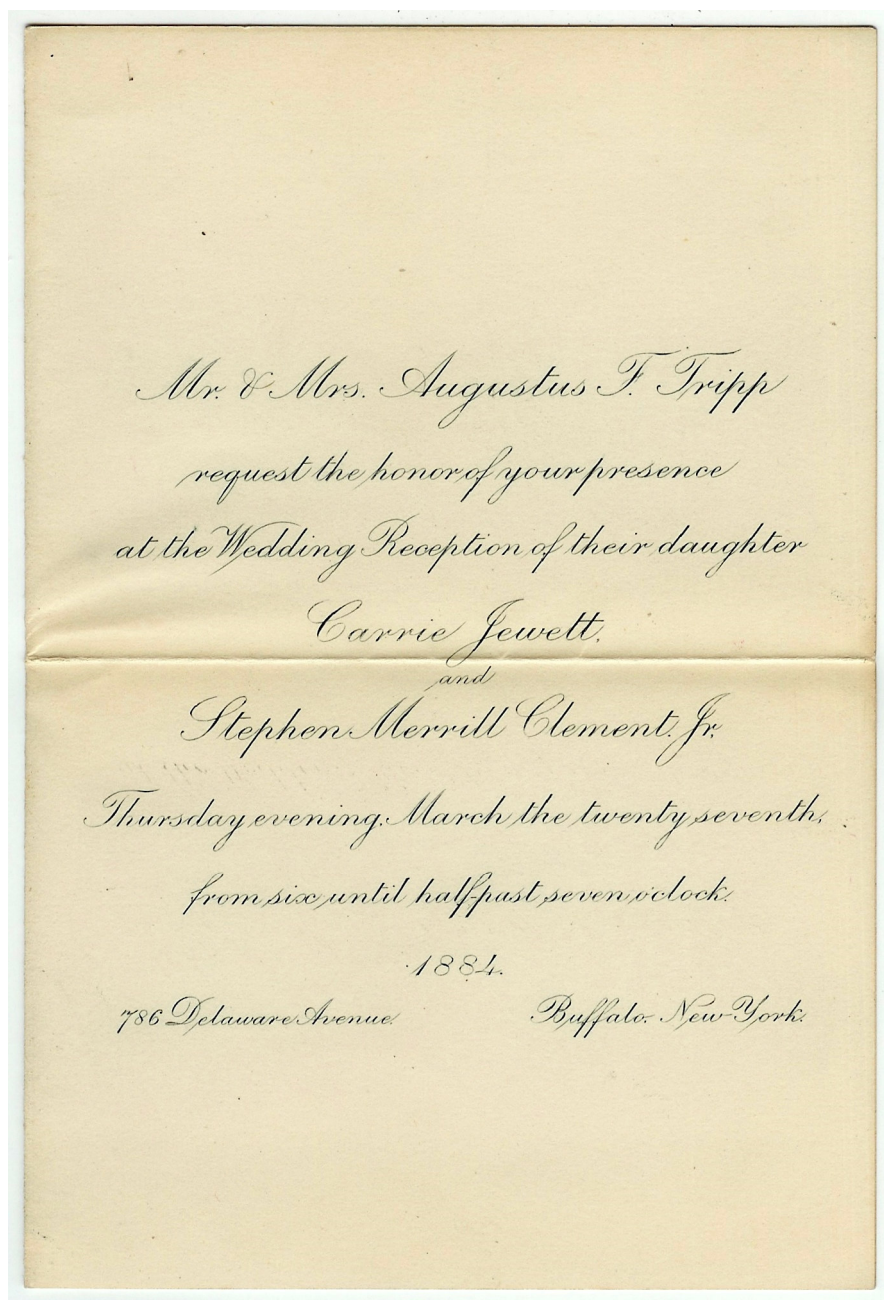
STEPHEN MERRELL CLEMENT (1859-1913)



SMC1 Strongbox

Stephen Mallory Clement, President, Jewett M Richmond, Vice President,
William Ketchum Allen, Cashier, Stephen Merrell Clement, Asst. Cashier.
W. K. Allen was Constance Allen Clement's grandfather.

*Stephen (1768-1846)¹, Frederick (1799-1881)², Stephen Mallory (1825-1892)³, Stephen Merrell (1859-1913)⁴,
Norman, Edith, Merrell, Harold, Marion, Stuart⁵*



CJC Wedding Scrapbook

STEPHEN MERRELL CLEMENT (1859-1913)



June 1, 1886

SMC1 Strongbox



SMC1 Strongbox

Carolyn Tripp Clement & Stephen Merrell Clement in two Daguerreotype Cartes de Visites, perhaps passport photos, which would account for the somber expressions.



Stephen (1768-1846)¹, Frederick (1799-1881)², Stephen Mallory (1825-1892)³, Stephen Merrell (1859-1913)⁴, Norman, Edith, Merrell, Harold, Marion, Stuart⁵

STEPHEN MERRELL CLEMENT (1859-1913)



Photo CJC/SMCIII Album

*Stephen (1768-1846)¹, Frederick (1799-1881)², Stephen Mallory (1825-1892)³, Stephen Merrell (1859-1913)⁴,
Norman, Edith, Merrell, Harold, Marion, Stuart⁵*

STEPHEN MERRELL CLEMENT (1859-1913)



Merrell Wreden

Carolyn & Stephen's children in 1896:
Harold, Marion, Merrell, Stuart, Norman



Buffalo Courier/CC

Marjorie Lewis Comings, Charles Miller Ramsdell, Norman Parsons Clement,
Edith Cochran Clement, Mary Louise Ramsdell Harwood, S. Merrell Clement
c.1890

*Stephen (1768-1846)¹, Frederick (1799-1881)², Stephen Mallory (1825-1892)³, Stephen Merrell (1859-1913)⁴,
Norman, Edith, Merrell, Harold, Marion, Stuart⁵*

BUFFALO COURIER-EXPRESS, Thursday, Feb. 3, 1955

REPRESENTATIVE HOME RULERS OF BUFFALO.



"SAY, MISTER, WON'T YOU PLEASE TAKE OUR PICTURE?"

"All right," said THE EXPRESS photographer, who happened to be doing a little work on the street the other day. "Stand in a row there, on the sidewalk! Now, keep still—think of Santa Claus for one second—that'll do. I've got you all in the dark box. Look in THE ILLUSTRATED EXPRESS next Sunday and see what a fine-looking group you made."

'Cuties of Yesteryear' Are Identified

Six "cuties of yesteryear," published as a mystery picture in yesterday's Courier-Express have been identified. The photograph, in the form of a clipping from The Illustrated Express, had been sent to this paper by a St. Catharines (Ont) reader.

Because the children were so appealing in their old-fashioned clothes, the picture was re-printed although the names of the youngsters were not known. The picture was no mystery to senior members of Buffalo's old-line families.

Identification was made by Mrs. Norman P. Clement, 17 Cleveland Ave., widow of Norman P. Clement, who was one of the photographer's subjects in the picture. She owns a print of the original.

The six neighborhood children were playing in front of a house at 172 Summer St. about 1890, Mrs. Clement said, when an Express photographer walked down the street. The youngsters, intrigued by the camera he was carrying asked:

"Say, Mister, won't you take our picture?"

The photographer obliged.

The caption of the picture, "Representative Home Rulers of Buffalo," proved to be true.

1. Marjorie Lewis, now Mrs. Emerson Comings of Great Barrington, Mass.

2. Charles Miller Ramsdell, an officer of the M. & T. Trust Co., who resided at 50 Saybrook Pl. He died July 31, 1932.

3. Norman Parsons Clement, president of the old Citizens Trust Co. and also president of the Genesee Properties. He died on April 27, 1951.

4. Edith Clement, who died as a child.

5. Mary Louise Ramsdell, now Mrs. Ramsdell Harwood of Greenwich, Conn.

6. S. Merrill Clement Jr., deceased, an architect, who moved to New York City.

Two of the three boys became leaders in Buffalo's financial circles and the third, No. 6, was an architect. A firm with which he once was associated, Edward Green and Sons, built the Genesee Building.

One little girl, No. 4, died shortly after the picture was taken. The other two girls, the only ones of the sextet still living, married and moved away from Buffalo. The families of all of the children were prominent as community leaders.

The grandparents of the Rams-

dell children, Mr. and Mrs. C. W. Miller built the home at 172 Summer St. The late Mr. Miller was the owner of a large "carriage trade" livery stable. Harry Ramsdell, the father of children No. 2 and No. 5, was a banker. The house at 172 Summer St. is now occupied by Dr. L. Halliday Meisburger.

Across the street at the corner of Oakland Pl. was the home of Mr. and Mrs. S. M. Clement, parents of children Nos. 3, 4 and 6 in the picture. The late Mr. S. M. Clement was a banker. Three doors west of the Clement home was the residence of Mr. and Mrs. George Lester Lewis, parents of No. 1 in the picture. The late Mr. Lewis, a lawyer, was the son of one of Buffalo's leading jurists, the late Judge Loran L. Lewis. At one time he defended Leon Czolgosz, the assassin of President McKinley.

"It's a small world," was the comment of Miss Elizabeth Lewis Kahle, Courier-Express photographer who took a picture of the clipping for yesterday's paper. She also is a granddaughter of Judge Loran Lewis, but didn't have any idea that No. 1 in the picture was her own cousin as a child.

Stephen (1768-1846)¹, Frederick (1799-1881)², Stephen Mallory (1825-1892)³, Stephen Merrell (1859-1913)⁴, Norman, Edith, Merrell, Harold, Marion, Stuart⁵

STEPHEN MERRELL CLEMENT (1859-1913)



HTC/PWC

Norman, CTC, Marion, Stuart, SMC
Merrell, Harold c.1900 East Aurora

*Stephen (1768-1846)¹, Frederick (1799-1881)², Stephen Mallory (1825-1892)³, Stephen Merrell (1859-1913)⁴,
Norman, Edith, Merrell, Harold, Marion, Stuart⁵*

STEPHEN MERRELL CLEMENT (1859-1913)



Photo CJC/SMCIII Album



HTC Stereopticon

Marion, Stuart, CTC, Harold, Margaret, SMC,
Merrell, David, Norman c.1910, The Homestead

*Stephen (1768-1846)¹, Frederick (1799-1881)², Stephen Mallory (1825-1892)³, Stephen Merrell (1859-1913)⁴,
Norman, Edith, Merrell, Harold, Marion, Stuart⁵*

STEPHEN MERRELL CLEMENT (1859-1913)



SMCIII/Red Cross

Carolyn Tripp Clement, by Cecilia Beaux (1855-1942), 1910
Cleaned & reframed by SMCIII



SMCIII

Stephen Merrell Clement, by Cecilia Beaux (1855-1942), 1910
Cleaned & reframed by SMCIII

*Stephen (1768-1846)¹, Frederick (1799-1881)², Stephen Mallory (1825-1892)³, Stephen Merrell (1859-1913)⁴,
Norman, Edith, Merrell, Harold, Marion, Stuart⁵*

STEPHEN MERRELL CLEMENT (1859-1913)



Photo CJC/SMCIII Album

*Stephen (1768-1846)¹, Frederick (1799-1881)², Stephen Mallory (1825-1892)³, Stephen Merrell (1859-1913)⁴,
Norman, Edith, Merrell, Harold, Marion, Stuart⁵*

STEPHEN MERRELL CLEMENT (1859-1913)



SMC2 to HTC1 to PWC

A Marine Bank note from 1902. Bank notes were treated as checks drawn on the bank, and like modern checks required a signature (or two) to be legal tender. In this case it was signed by the president, S. M. Clement, and the cashier, John H. Lascelles, who was brought to Buffalo from The Bank of Dunkirk by S. M. Clement 1.



Palmer's Views

Marine Bank 1881-1913 – Home of the bank from the beginning of the presidency of Stephen Mallory Clement through the presidency of Stephen Merrell Clement.

Stephen (1768-1846)¹, Frederick (1799-1881)², Stephen Mallory (1825-1892)³, Stephen Merrell (1859-1913)⁴, Norman, Edith, Merrell, Harold, Marion, Stuart⁵

STEPHEN MERRELL CLEMENT (1859-1913)

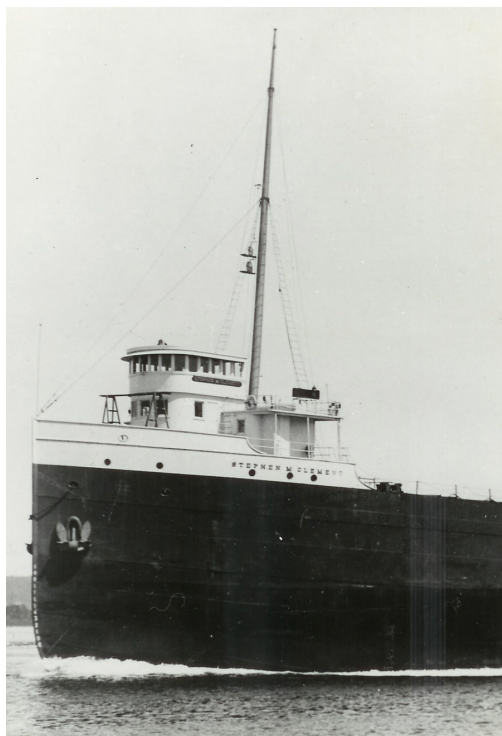


SHC2

Portrait study by Edmund Charles Tarbell (1862-1938) for Marine Bank portrait.

*Stephen (1768-1846)¹, Frederick (1799-1881)², Stephen Mallory (1825-1892)³, Stephen Merrell (1859-1913)⁴,
Norman, Edith, Merrell, Harold, Marion, Stuart⁵*

STEPHEN MERRELL CLEMENT (1859-1913)



Boland & Cornelius

The lake freighter Stephen M. Clement

From Harold Clement's diary of 1905 (aged 15): "Sat May 20 sunny: Arrived at Cleveland 7:30 AM. We had breakfast on the boat [The Stephen M. Clement]. Went to Lorain in a special trolley. Marion christened the boat. We had lunch at a club in Cleveland. Came home at 3 o'clock. Rode up in Mr. [Hugh] Kennedy's Peerless."



Boland & Cornelius

The lake freighter Stephen M. Clement,
renamed the John J. Boland

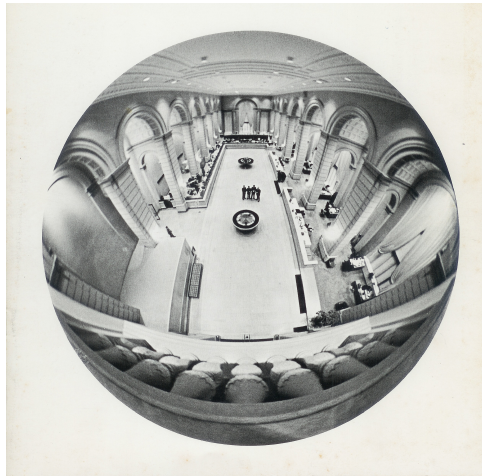
*Stephen (1768-1846)¹, Frederick (1799-1881)², Stephen Mallory (1825-1892)³, Stephen Merrell (1859-1913)⁴,
Norman, Edith, Merrell, Harold, Marion, Stuart⁵*

STEPHEN MERRELL CLEMENT (1859-1913)



American Architect & Building News

A rendering of the new Marine National Bank building, at Main & Seneca Streets in Buffalo, completed in 1915. Edward B. Green was the architect of the bank as well as of 786 Delaware Avenue. Stephen Clement never moved into either the new building, or into his new house.



Marine Midland Banks 1969

A fisheye lens view, from the board room, of the main banking floor of the Marine National Bank building, after its remodeling by Gordon Bunshaft, of S.O.M., in 1958. The commissioning & design of the building was presided over by Stephen M Clement 2.

Stephen (1768-1846)¹, Frederick (1799-1881)², Stephen Mallory (1825-1892)³, Stephen Merrell (1859-1913)⁴, Norman, Edith, Merrell, Harold, Marion, Stuart⁵

STEPHEN MERRELL CLEMENT (1859-1913)

MARINE NATIONAL BANK OF BUFFALO.		
List of Stockholders,		October 1, 1911.
Name	Number of Shares	
S. M. Clement	6,019	
J. J. Albright	2,187	
E. H. Hutchinson	1,300	
William H. Gratwick	1,109	
Estate of J. M. Richmond	870	
Fidelity Trust Co., Trustee M.M. Richmond Estate	730	
Edmund Hayes	608	
Estate of A. E. James	435	
Henry A. C. Taylor	435	
George B. Mathews	400	
Charles H. Keep	380	
Robert W. Pomeroy	300	
George L. Williams	286	
Seymour H. Knox	250	
O. E. Foster	240	
Cornelius Vanderbilt	218	
Trustees for Josephine L. Goodyear,	213	
John H. Lascelles	200	
Ella C. Goodyear	198	
Moses Taylor	184	
Hattie Brooks Stevens	184	
Ella Brooks Solano	184	

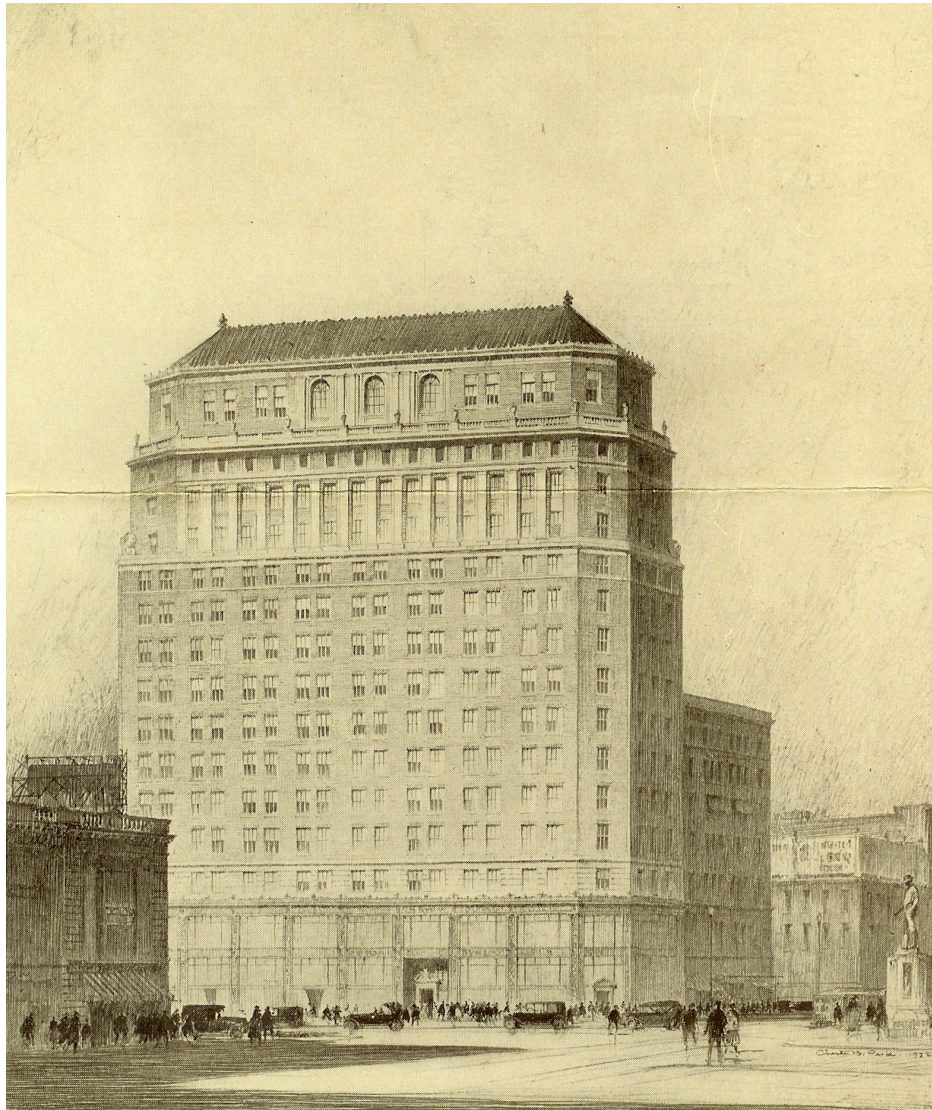
SMC Strongbox

SMC holdings represent 30% of the stock in the bank.



Stephen (1768-1846)¹, Frederick (1799-1881)², Stephen Mallory (1825-1892)³, Stephen Merrell (1859-1913)⁴, Norman, Edith, Merrell, Harold, Marion, Stuart⁵

STEPHEN MERRELL CLEMENT (1859-1913)



Promotional Brochure

Rendering of the Genesee Building 1923. Built by the Estate of
Stephen M. Clement, and Shelton Weed, designed by
Edward B. Green, with S. Merrell Clement as lead designer.
Extant, reorganized the Hyatt Hotel.

*Stephen (1768-1846)¹, Frederick (1799-1881)², Stephen Mallory (1825-1892)³, Stephen Merrell (1859-1913)⁴,
Norman, Edith, Merrell, Harold, Marion, Stuart⁵*

STEPHEN MERRELL CLEMENT (1859-1913)



HTC Album

Memorial flowers for SMC, in his office at The Marine Bank, 1913.



Peter Clement

S. M. Clement Family monument
Forest Lawn Cemetery, Buffalo, Section 4

*Stephen (1768-1846)¹, Frederick (1799-1881)², Stephen Mallory (1825-1892)³, Stephen Merrell (1859-1913)⁴,
Norman, Edith, Merrell, Harold, Marion, Stuart⁵*