

United States Department of the Interior  
National Park Service

National Register of Historic Places  
Continuation Sheet

ELMWOOD HISTORIC DISTRICT (EAST)

Name of Property

Erie County, New York

County and State

Section 11 Page 1

PHOTO LOG

Photographer(s): Hannah Beckman and Juliana Glassco  
Clinton Brown Company Architecture  
The Market Arcade  
617 Main Street, Suite M303  
Buffalo, NY 14203

Date: 2015-2016

TIFF Files: CD-R of .tiff files on file at  
National Park Service  
Washington DC

and

New York SHPO  
PO Box 186  
Waterford, NY 12188

Photo List:

0001. Elmwood Historic District (East), Elmwood Avenue near Forest Avenue, looking NE.
0002. Elmwood Historic District (East), Lincoln Parkway near Rumsey Road, looking S.
0003. Elmwood Historic District (East), The Larkin House, 65 Lincoln Parkway, looking E.
0004. Elmwood Historic District (East), Rumsey Road near Rumsey Lane, looking west.
0005. Elmwood Historic District (East), Elmwood Avenue near Bird Avenue, looking NE
0006. Elmwood Historic District (East), west side of Granger Place, looking SW.
0007. Elmwood Historic District (East), west side of Lincoln Parkway near Soldiers Circle, looking NW.
0008. Elmwood Historic District (East), west side of Berkley Place near Bird Avenue, looking NW.
0009. Elmwood Historic District (East), looking NW at residential section of Delaware Avenue.
0010. Elmwood Historic District (East), Frank Lloyd Wright-designed William Heath House at 76 Soldiers Place, looking SW from Bird Avenue.
0011. Elmwood Historic District (East), Soldiers Circle, looking SE toward Chapin Parkway.
0012. Elmwood Historic District (East), north side of Bidwell Parkway, looking N.
0013. Elmwood Historic District (East), Bidwell Parkway, near Lincoln Woods Lane, view SW.
0014. Elmwood Historic District (East), Buffalo Seminary, 618 Potomac Avenue, looking SE from Bidwell Parkway
0015. Elmwood Historic District (East), apartment building at 176 Chapin Parkway, looking NW along Potomac Avenue.
0016. Elmwood Historic District (East), apartment buildings on north side of Potomac Avenue, looking N.
0017. Elmwood Historic District (East), west side of Chapin Parkway, looking W.

**United States Department of the Interior  
National Park Service**

**National Register of Historic Places  
Continuation Sheet**

**ELMWOOD HISTORIC DISTRICT (EAST)**

**Name of Property**

**Erie County, New York**

**County and State**

Section 11 Page 2

0018. Elmwood Historic District (East), historic gates at south end of Argyle Park, looking N.
0019. Elmwood Historic District (East), former School 56 on West Delavan Avenue, looking NW.
0020. Elmwood Historic District (East), Lafayette Avenue Presbyterian Church, looking NE.
0021. Elmwood Historic District (East), historic hitching post at 619 Lafayette Avenue, looking S.
0022. Elmwood Historic District (East), Folk Victorian farmhouse at 638 Lafayette Avenue, looking N.
0023. Elmwood Historic District (East), Park Lane Condominium, looking SW.
0024. Elmwood Historic District (East), Chapin Parkway at gates Circle, looking NW.
0025. Elmwood Historic District (East), Gates Circle, looking N.
0026. Elmwood Historic District (East), Melbourne Court, looking E.
0027. Elmwood Historic District (East), Queen Anne style houses on north side of Auburn Avenue near Delaware Avenue, looking NW.
0028. Elmwood Historic District (East), looking SE at corner of Elmwood Avenue and Cleveland Avenue.
0029. Elmwood Historic District (East), Chemical No 5. Firehouse, looking SE.
0030. Elmwood Historic District (East), James and Fanny How House, 41 St Catherine's Court, looking S.
0031. Elmwood Historic District (East), Nardin Academy, looking NE.
0032. Elmwood Historic District (East), Delaware Avenue near Cleveland Avenue, looking NW.
0033. Elmwood Historic District (East), west side of Tudor Place, looking NW.
0034. Elmwood Historic District (East), Unitarian Universalist Church of Buffalo, looking N.
0035. Elmwood Historic District (East), south side of West Ferry Street, looking SW.
0036. Elmwood Historic District (East), apartment building at 737 West Ferry Street, looking SW.
0037. Elmwood Historic District (East), Crane Branch Library on Elmwood Avenue and Highland Avenue, looking NE.
0038. Elmwood Historic District (East), apartment building at corner of Elmwood Avenue and Anderson Place, looking NE.
0039. Elmwood Historic District (East), Elmwood Avenue at Anderson Place, looking NE.
0040. Elmwood Historic District (East), south side of Lexington Avenue near Atlantic Avenue, looking SE.
0041. Elmwood Historic District (East), the Word of Life Church at 181 West Utica Street, looking N.
0042. Elmwood Historic District (East), commercial building at corner of Elmwood Avenue and Hodge Avenue, looking SW.
0043. Elmwood Historic District (East), house at 95 Hodge Avenue, looking N.
0044. Elmwood Historic District (East), Women and Children's Hospital of Buffalo, looking NE.
0045. Elmwood Historic District (East), east side of Oakland Place, looking NE.
0046. Elmwood Historic District (East), house at 41 St. George's Square, looking S.
0047. Elmwood Historic District (East), apartments on Elmwood Avenue between Bryant and Summer Streets, view NW.
0048. Elmwood Historic District (East), south side of Summer Street, view S.

**United States Department of the Interior  
National Park Service**

**National Register of Historic Places  
Continuation Sheet**

Section 11 Page 3

**ELMWOOD HISTORIC DISTRICT (EAST)**

**Name of Property**

**Erie County, New York**

**County and State**

**BUFFALO STREET NAME CHANGES AS REFERRED TO IN THE ELMWOOD HISTORIC DISTRICT (WEST) AND (EAST) NOMINATIONS**

Adapted from: Susan Kirwan, "Buffalo Street Name Changes," Buffalo and Erie County Public Library, 2005, <http://www1.buffalolib.org/libraries/collections/genealogy/pdfs/SubjectGuides/Buffalo%20Street%20Name%20Changes.pdf>.

<b>Present Name</b>	<b>Former Name</b>	<b>Date Changed</b>
Colonial Circle	Bidwell Place (named for Gen. Daniel D. Bidwell)	
Delavan Avenue	Gulf Road	Ca. 1853
Delaware Avenue	Delaware Street	1879
Elmwood Avenue	North William; Oakland; Macpherson; Fremont Place (sections)	
Gates Circle	Chapin Place (named for Brig. Gen. Edward Payson Chapin)	
Granger Place	Elmhurst Street	
Lafayette Avenue	Bouck Street (named for Gov. William C. Bouck)	1898
Lexington Avenue	Butler Street	1888
Lincoln Parkway	North Lincoln, Park Lake	
Main Street	The Buffalo Road; Vanstaphorst; Buffalo and Williamsville Macadam Road	
Melbourne Street	Pacific Street	
North Street	Guideboard Road	
Norwood Avenue	Howard Avenue (named for George R. Howard)	1893
Potomac Avenue	Clinton Avenue	1879
Richmond Avenue	Rogers Street (named for Harry W. Rogers); The Avenue (named by F.L. Olmsted)	1879
Rumsey Road	Rumsey Street, Hayden Street	
West Delavan Avenue	17 <sup>th</sup> Street, Gulf Street	

United States Department of the Interior  
National Park Service

National Register of Historic Places  
Continuation Sheet

Section 11 Page 4

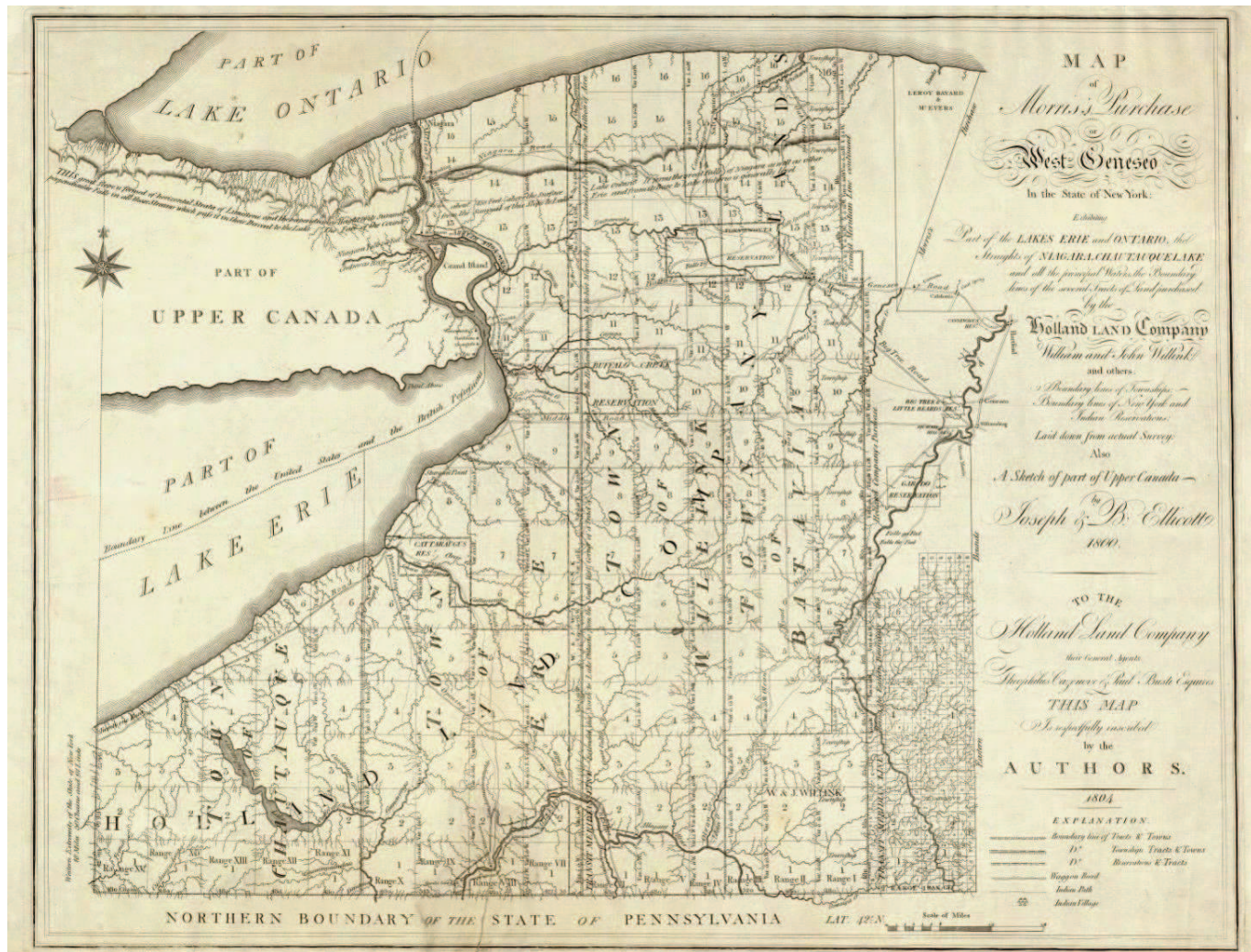
**ELMWOOD HISTORIC DISTRICT (EAST)**

Name of Property

Erie County, New York

County and State

**HISTORIC MAPS**



**Map of the Holland Land Company purchase in Western New York, 1804**

Joseph Ellicott and Benjamin Ellicott, *Map of Morris's Purchase or West Geneseo in the State of New York: Exhibiting Part of the Lakes Erie and Ontario, the Straights of Niagara, Chautauque Lake, and All the Principal Waters, the Boundary Lines of the Several Tracts of Land Purchased by the Holland Land Company, William and John Willink, and Others, Boundary Lines of Townships, Boundary Lines of New York and Indian Reservations, Laid down from Actual Survey, Also a Sketch of Part of Upper Canada*, map ([New York?]: Holland Land, 1804).

United States Department of the Interior  
National Park Service

National Register of Historic Places  
Continuation Sheet

Section 11 Page 5

ELMWOOD HISTORIC DISTRICT (EAST)

Name of Property

Erie County, New York

County and State



**Detail, previous map**

Note that the Buffalo Road (now Main Street) is depicted here, as is a road between the Black Rock ferry and the Buffalo Road (and early Ferry Street). Noted here on the map is a saw mill at the Buffalo Road on the Scajaquada Creek, owned by William T. Johnstone. This map also shows the location of "New Amsterdam" (now Buffalo) in relation to the Mile Strip Reservation and the Buffalo Creek Reservation.

United States Department of the Interior  
National Park Service

National Register of Historic Places  
Continuation Sheet

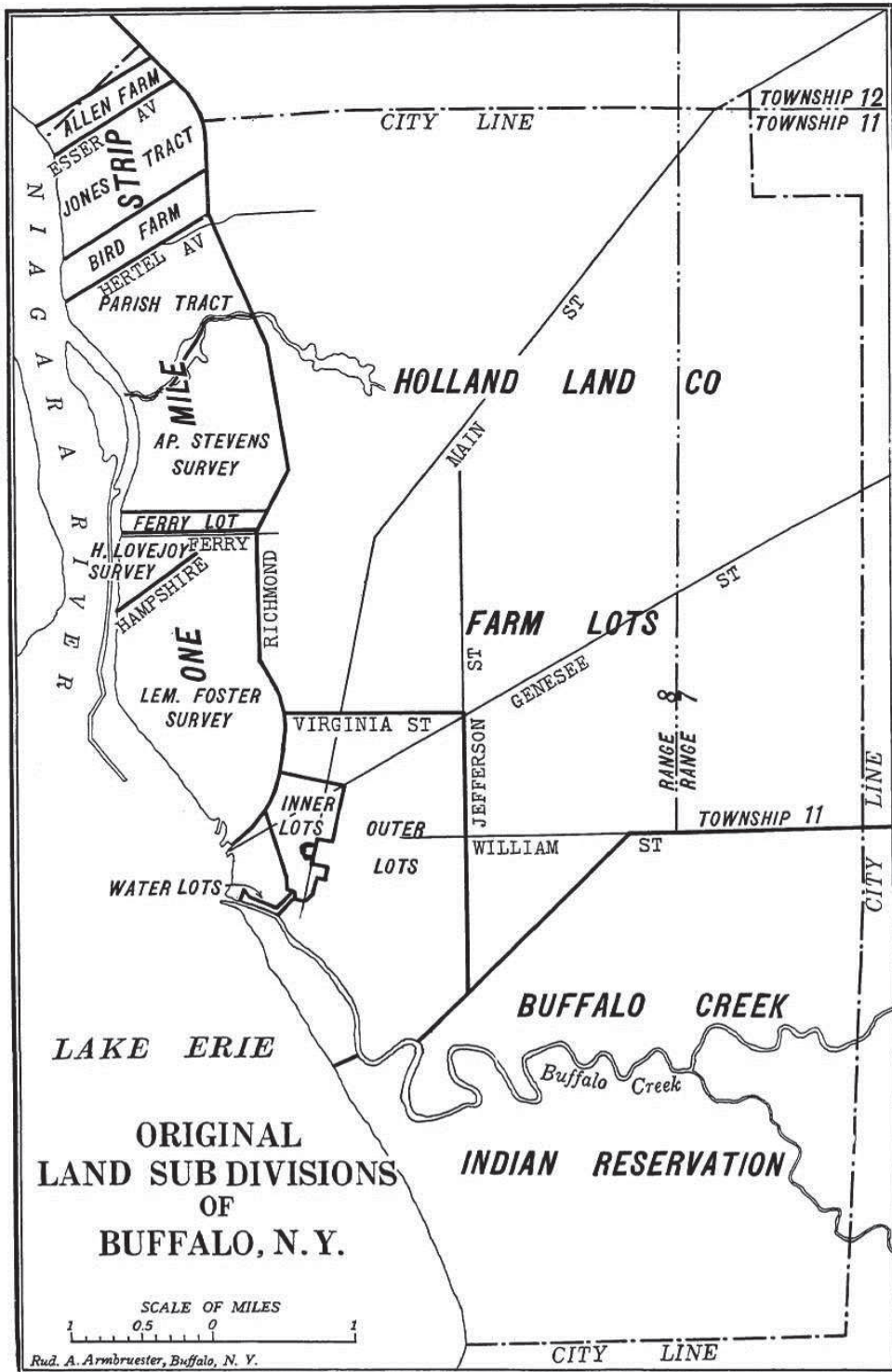
Section 11 Page 6

ELMWOOD HISTORIC DISTRICT (EAST)

Name of Property

Erie County, New York

County and State



**Original Land Subdivisions of Buffalo, NY (1922, info ca. 1804)**

This 1922 map depicts the original ca. 1804 land divisions in the Buffalo area with some reference to modern roads (such as Richmond Ave which did not exist in the early 1800s). Note the Mile Strip Reservation which contained the Village of Black Rock (at left along Niagara River). Notice here the division of Inner Lots and Outer Lots, with the Holland Land Co. Farm Lots beyond. The bulk of the future Elmwood district would be established in the Farm Lots area which was subsumed by the city of Buffalo in 1853. Courtesy Buffalo as an Architectural Museum.

United States Department of the Interior  
National Park Service

National Register of Historic Places  
Continuation Sheet

Section 11 Page 7

ELMWOOD HISTORIC DISTRICT (EAST)

Name of Property

Erie County, New York

County and State



“Map of Township 11 R.8 & W. Part T11 R.7 Holland Cos’ Land and N.Y. State Reservation in the town of Black Rock,” from the Emslie atlas (1859, information ca. 1820s)

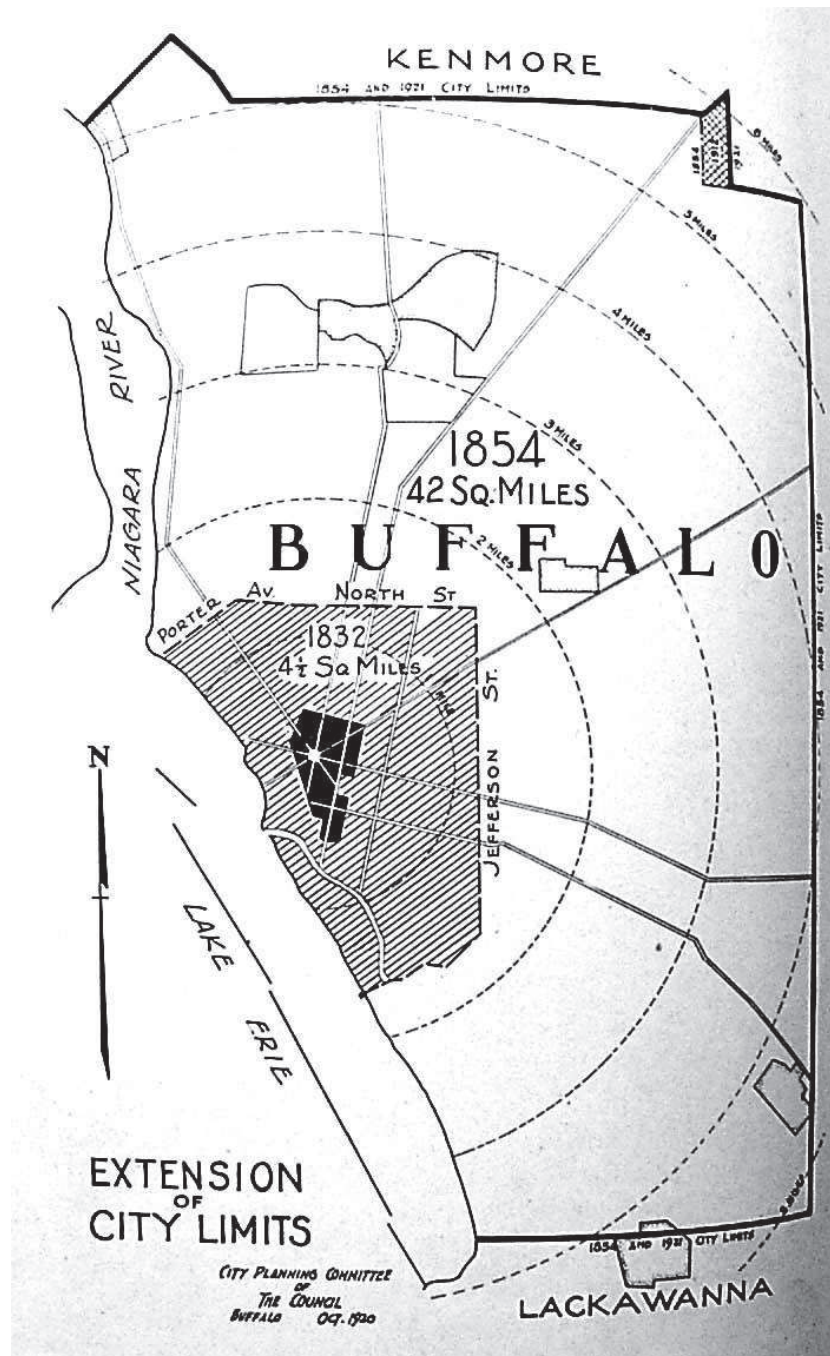
This atlas records the earliest land purchasers in the future Elmwood district. Shown here is Main Street (center, angled right) which bends at the intersection of Ferry Street (runs west-east). This intersection was known as Cold Spring, and the other road intersecting was the historic route of the northern portion of Delaware Avenue. Delaware was eliminated at this intersection when it was joined with the extension from downtown. This map predates Elmwood and Richmond Avenues – the Elmwood Historic District boundaries range approximately from Lot 53 (owned by Jonathan Dodge) north to Lot 48 (owned by Erastus Granger). The western edge of the boundary is along the Mile Strip Reservation line, shown toward the left of this image. Courtesy BECHS.

United States Department of the Interior  
National Park Service

National Register of Historic Places  
Continuation Sheet

Section 11 Page 8

ELMWOOD HISTORIC DISTRICT (EAST)  
Name of Property  
Erie County, New York  
County and State



"Extension of City Limits" (1920)

While a later map, this highlights clearly the boundary expansions of the city of Buffalo. The black-shaded area is the original 1804 city established by Ellicott. Visible here is the tremendous growth from the original 1832 city boundaries to the vast territory subsumed in 1853/54. Courtesy Buffalo as an Architectural Museum.

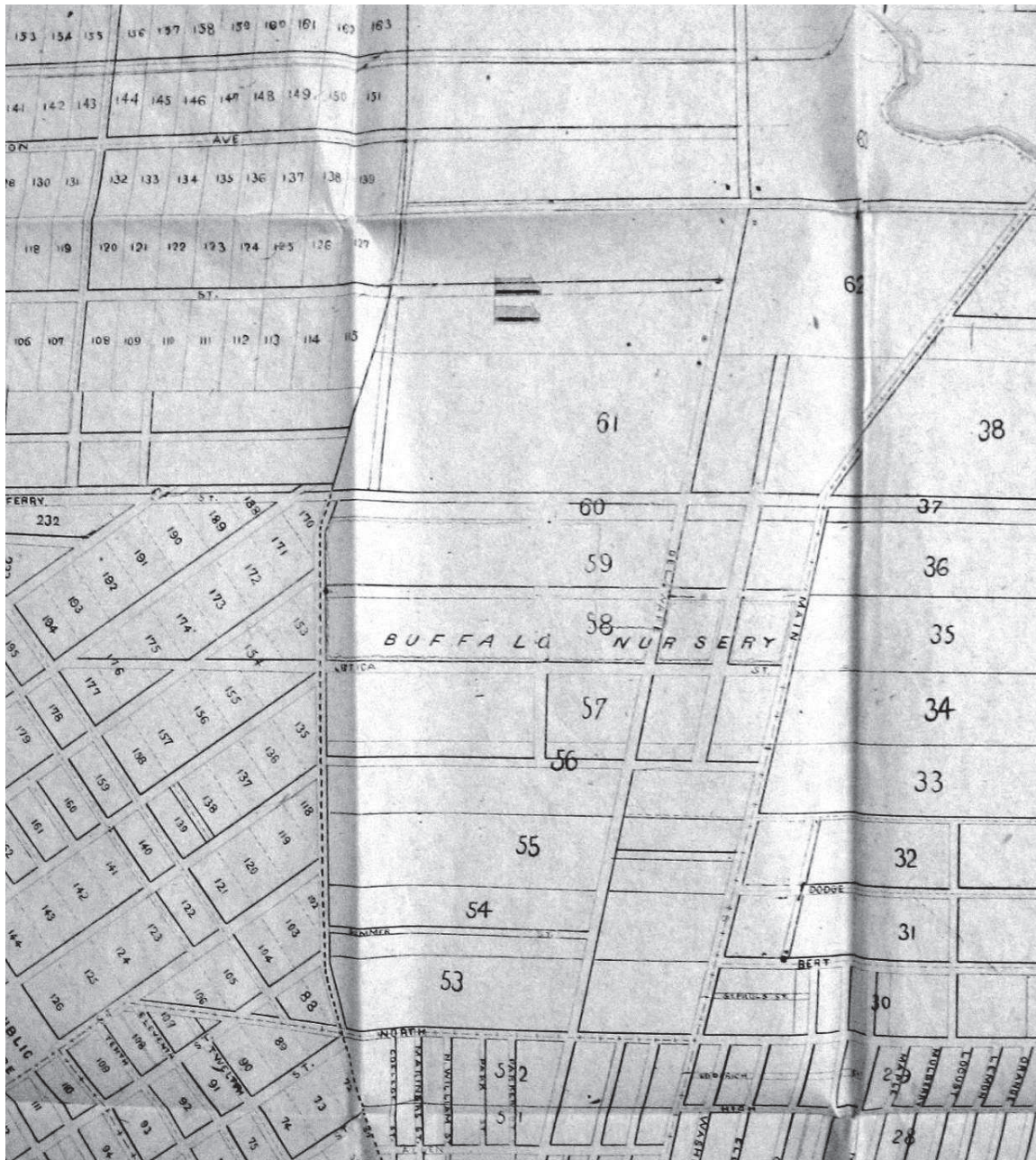


United States Department of the Interior  
National Park Service

National Register of Historic Places  
Continuation Sheet

Section 11 Page 9

ELMWOOD HISTORIC DISTRICT (EAST)  
Name of Property  
Erie County, New York  
County and State



**Detail, "A New Map of the City of Buffalo..." (1854)**

Drawn from surveys conducted in 1853 shortly after Buffalo annexed the Town of Black Rock, this detail shows the area around the future Elmwood district. Note here the indication of Rogers Street (Richmond Avenue) along the Mile Strip Reservation line, and some early west-east streets have been established. Notice the "Buffalo Nursery" territory from Main Street to Rogers Street. Courtesy BECPL.

United States Department of the Interior  
National Park Service

National Register of Historic Places  
Continuation Sheet

Section 11 Page 10

ELMWOOD HISTORIC DISTRICT (EAST)  
Name of Property  
Erie County, New York  
County and State



Detail, "Williams' New Map of the City of Buffalo" (1855)

The approximate boundaries of the Elmwood Historic District (East) are superimposed in red on this map, as well as the proposed boundaries of the Elmwood Historic District (West) in gray. This map indicates land ownership and development shortly after the city expanded in 1853. Courtesy Cornell University.

United States Department of the Interior  
National Park Service

National Register of Historic Places  
Continuation Sheet

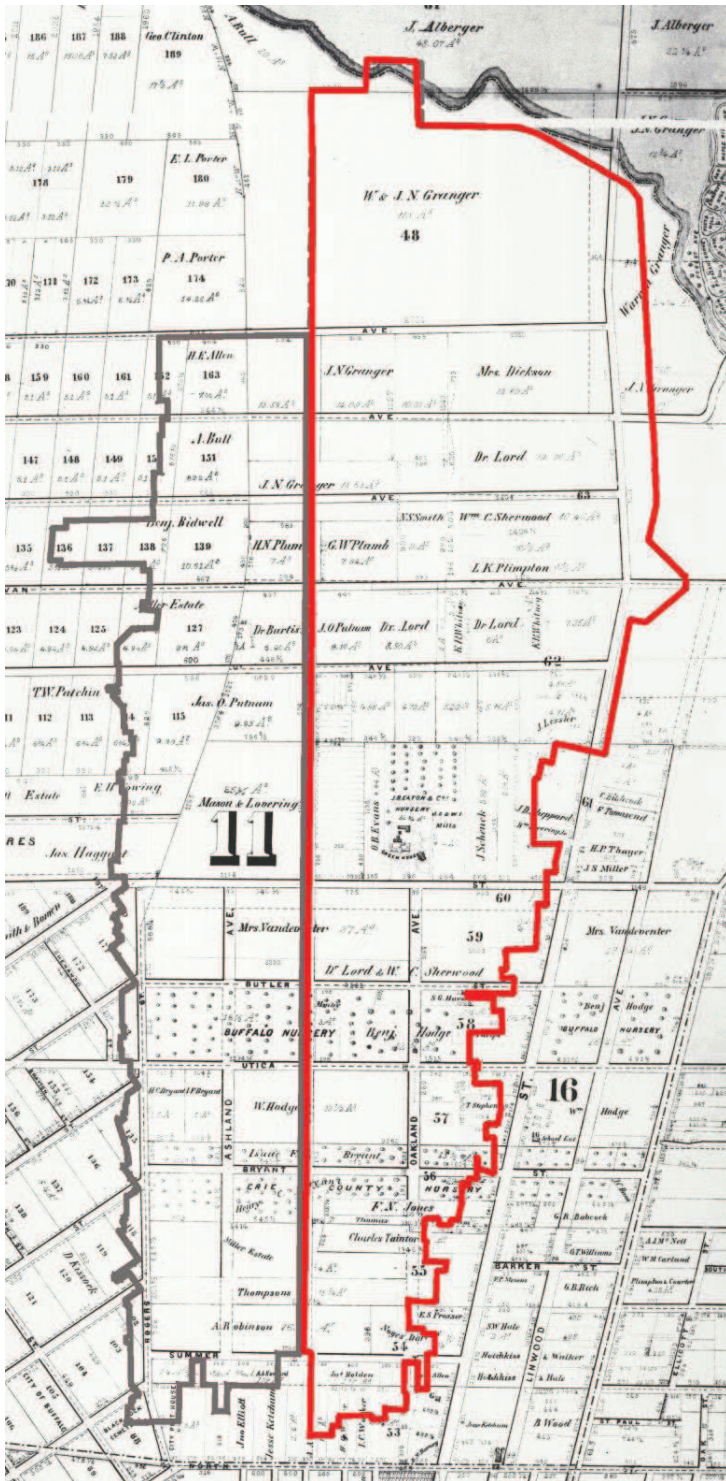
Section 11 Page 11

ELMWOOD HISTORIC DISTRICT (EAST)

Name of Property

Erie County, New York

County and State



Details of previous map.

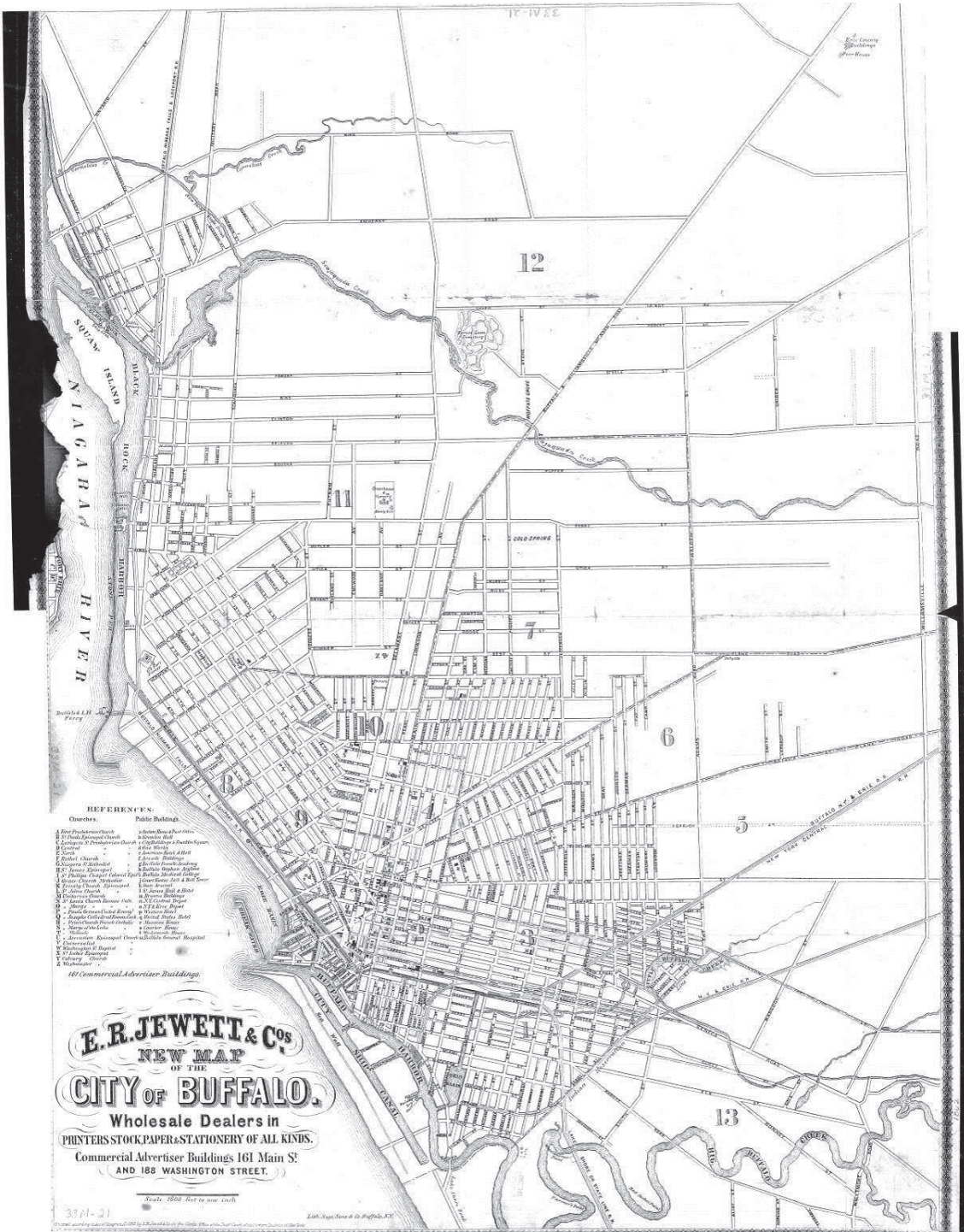
This view clearly illustrates the largely undeveloped land in the area. Notice the 3 prominent nurseries in the area: the Erie County Nursery owned by the Bryant family, the Buffalo Nursery run by Col. Benjamin Hodge and Eaton's Oaklands Nursery on Ferry Street. Rogers Street (future Richmond Avenue) in the 1850s is a much shorter street, only extending between Summer and Ferry Streets.

United States Department of the Interior  
National Park Service

National Register of Historic Places  
Continuation Sheet

Section 11 Page 12

ELMWOOD HISTORIC DISTRICT (EAST)  
Name of Property  
Erie County, New York  
County and State



"New Map of the City of Buffalo" (1862)  
Courtesy BECPL

United States Department of the Interior  
National Park Service

National Register of Historic Places  
Continuation Sheet

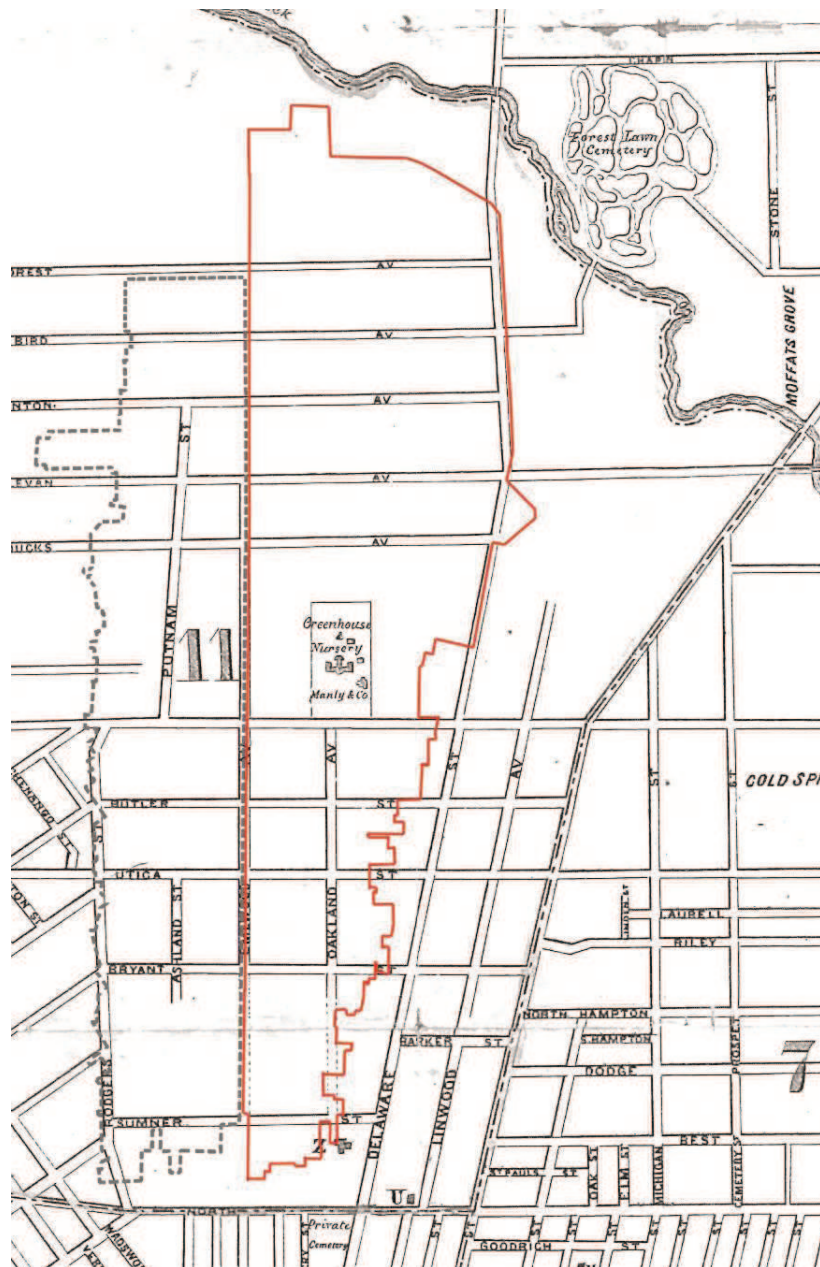
Section 11 Page 13

ELMWOOD HISTORIC DISTRICT (EAST)

Name of Property

Erie County, New York

County and State



**Detail, previous map**

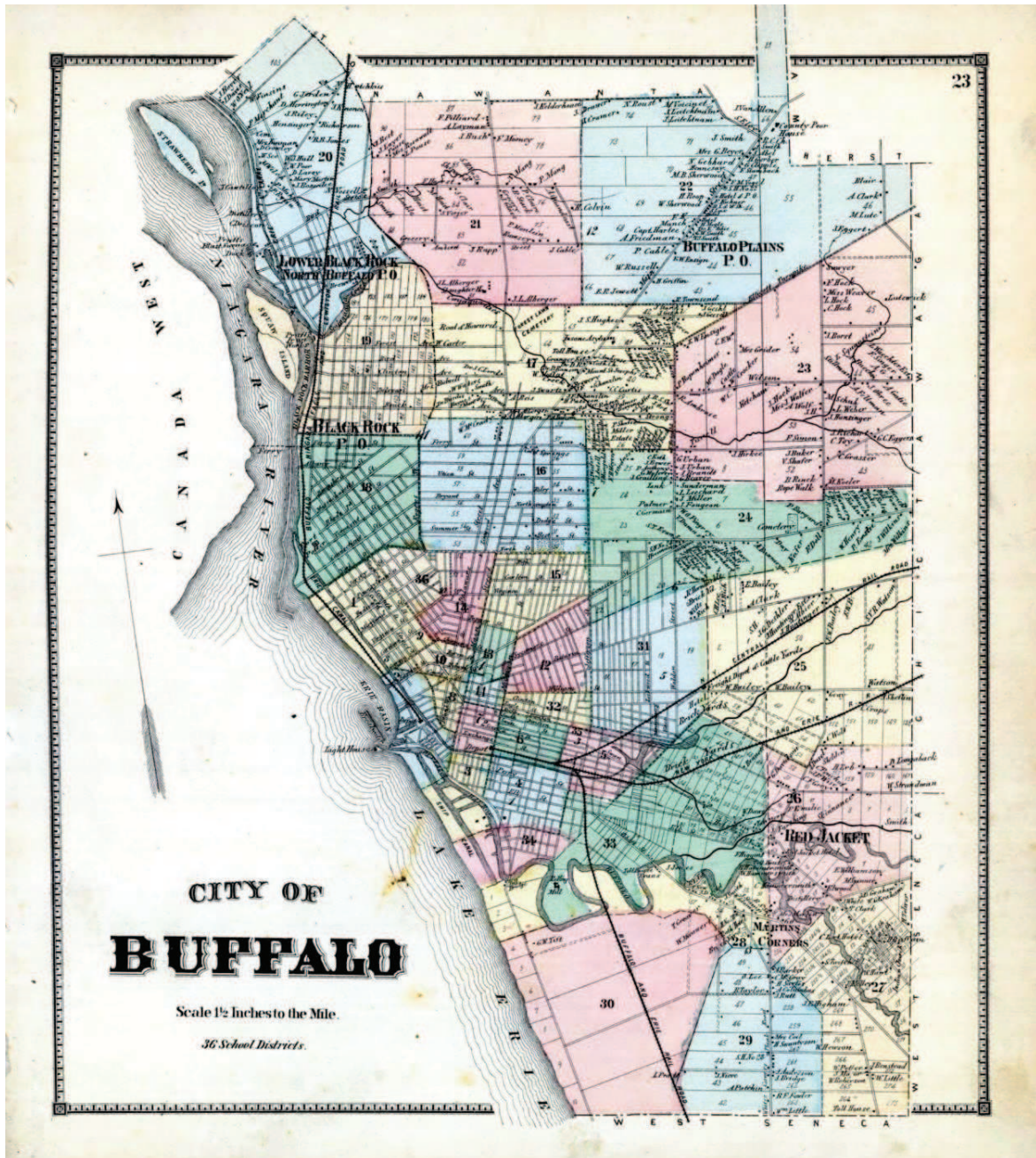
Shown here are the approximate boundaries of the Elmwood Historic District (East) in red and the Elmwood Historic District (West) in gray, juxtaposed on the street map from 1862. Note here the Manley greenhouses, once the Oaklands nursery.

United States Department of the Interior  
National Park Service

National Register of Historic Places  
Continuation Sheet

Section 11 Page 14

ELMWOOD HISTORIC DISTRICT (EAST)  
Name of Property  
Erie County, New York  
County and State



“City of Buffalo” from the Stone and Stewart Atlas (1866)

Note the development of the street pattern east of Black Rock in the former Mile Strip Reservation, it is primarily a few west-east streets but little else. Courtesy ancestry.com

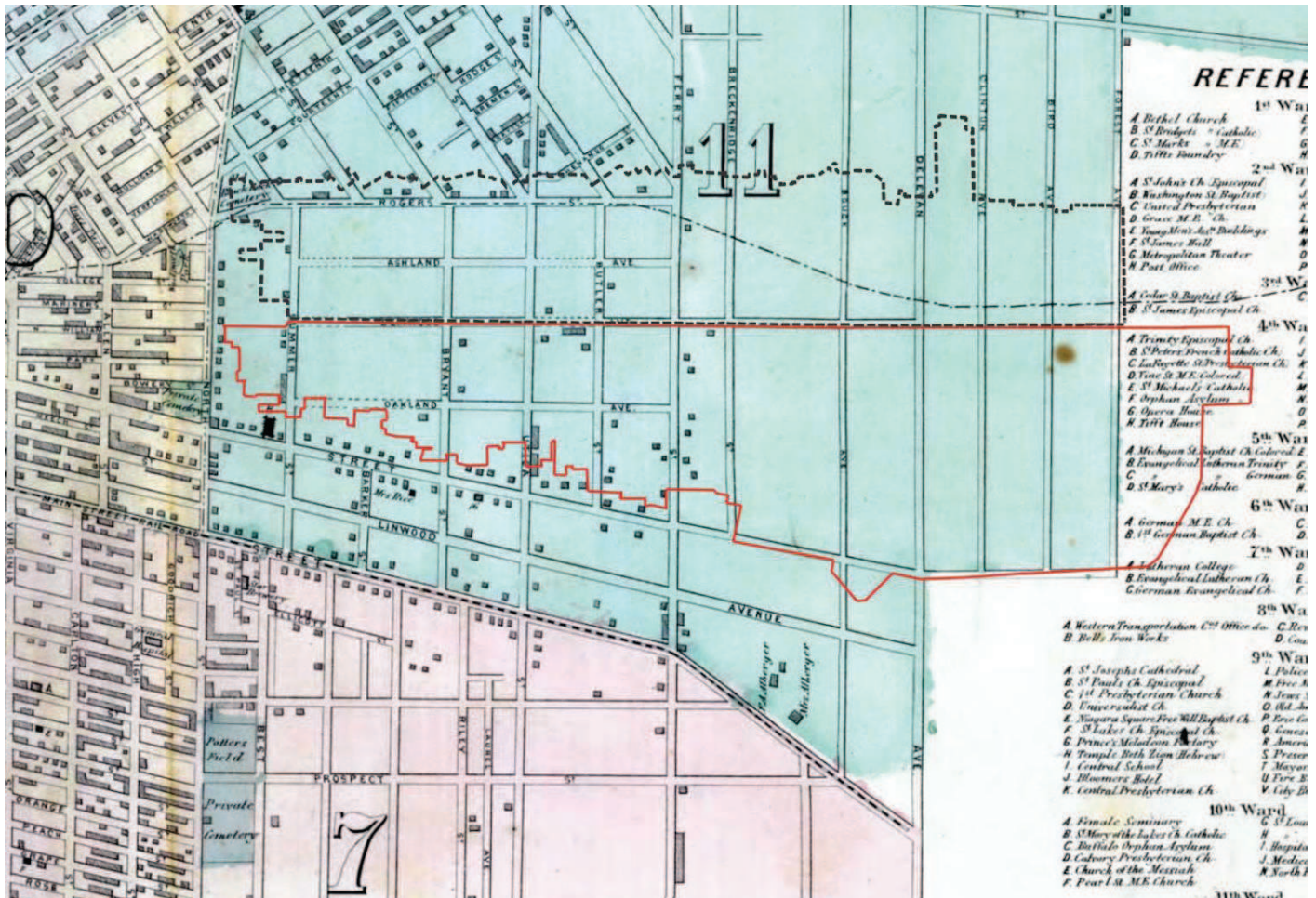
United States Department of the Interior  
National Park Service

National Register of Historic Places  
Continuation Sheet

Section 11 Page 15

**ELMWOOD HISTORIC DISTRICT (EAST)**

Name of Property  
**Erie County, New York**  
County and State



**Detail, "Map of a Part of the City of Buffalo" from the Stone and Stewart Atlas (1866)**

The approximate boundaries of the Elmwood Historic District (East) in red and Elmwood Historic District (West) in black are overlaid on this detail view of a map of the city of Buffalo from 1866. While buildings are shown here as indistinct squares, note the lack of any real construction in the future district in the 1860s. In comparison, the Allentown Historic District, part of which is located at the left of this image, is densely built up.

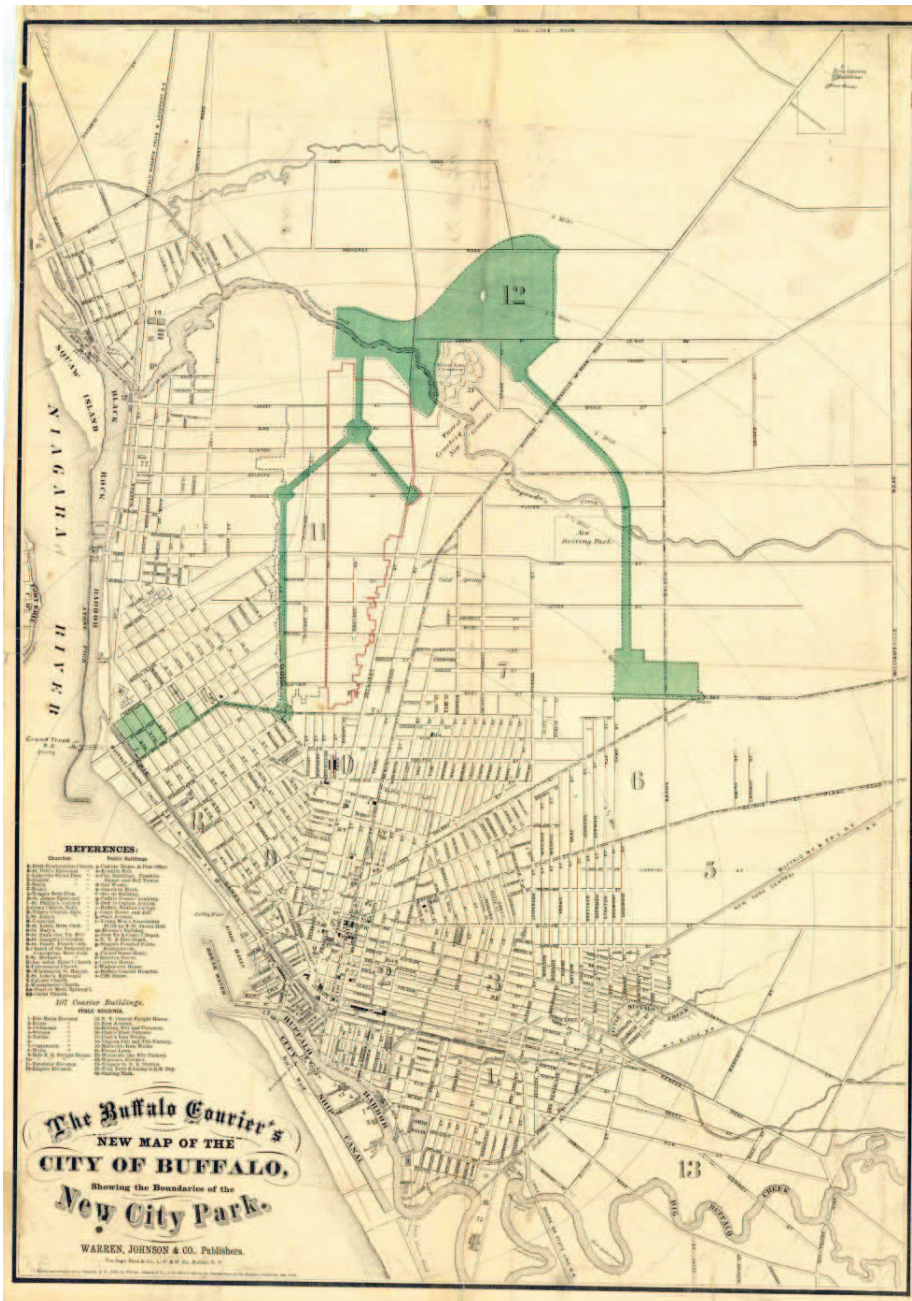
Courtesy ancestry.com

United States Department of the Interior  
National Park Service

National Register of Historic Places  
Continuation Sheet

Section 11 Page 16

ELMWOOD HISTORIC DISTRICT (EAST)  
Name of Property  
Erie County, New York  
County and State



“Buffalo Courier’s New Map of the City of Buffalo, showing the Boundaries of the New City Park,” (1869)  
Shown here is an overlay of the proposed Olmsted parks and parkways system on the pre-existing street pattern.  
The approximate boundaries of the Elmwood Historic District (East) in red and Elmwood Historic District (West)  
in gray are also shown. Courtesy Dartmouth College.



United States Department of the Interior  
National Park Service

National Register of Historic Places  
Continuation Sheet

Section 11 Page 17

ELMWOOD HISTORIC DISTRICT (EAST)

Name of Property

Erie County, New York

County and State



**“Part of the Eleventh Ward” from the Hopkins Atlas (1872)**

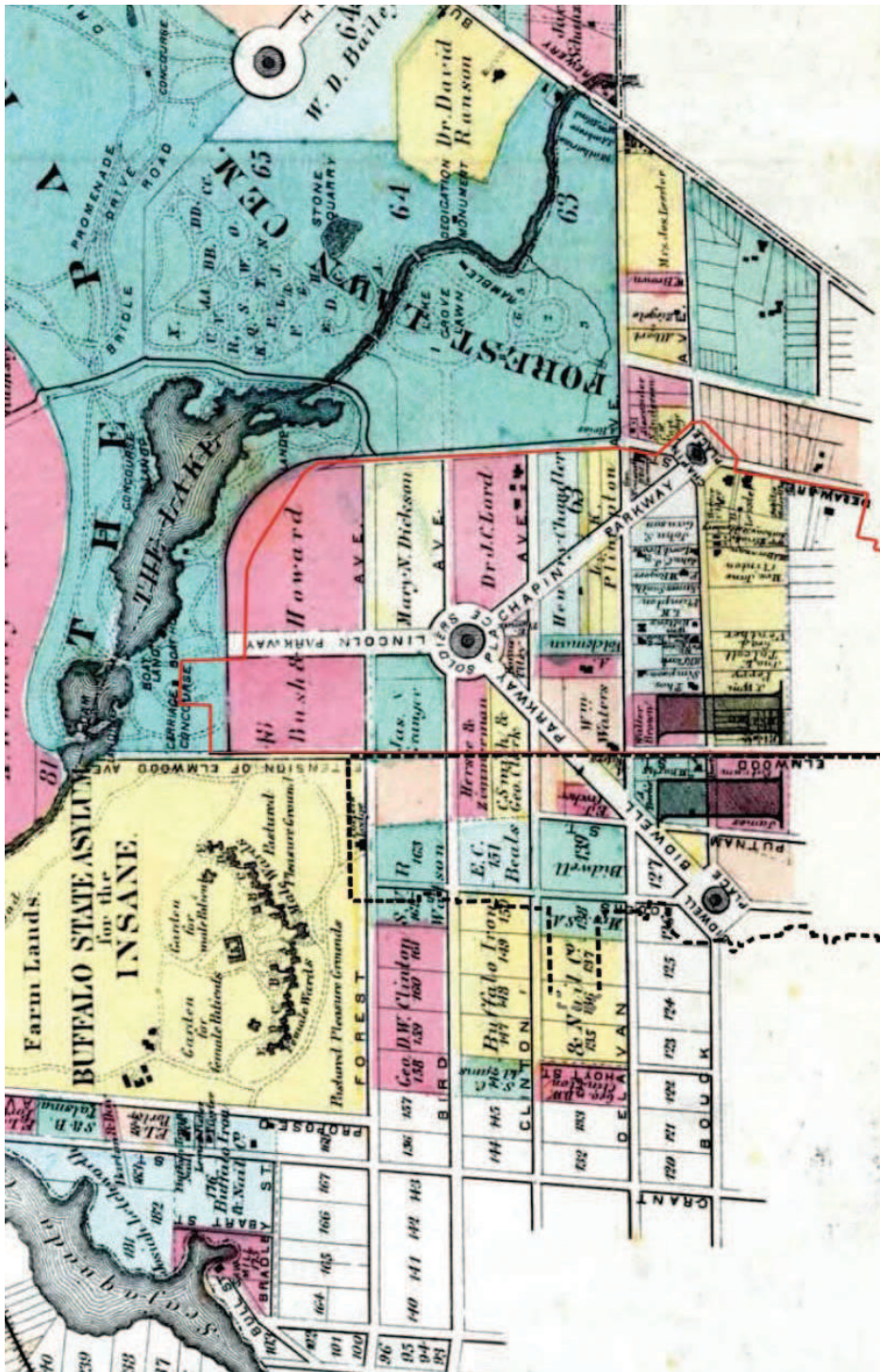
The approximate boundaries of the Elmwood Historic District (East) in red and Elmwood Historic District (West) in gray are superimposed on this map, which highlights property ownership in 1872. This informative map shows how relatively unsettled this swath of land was in the 1870s, with some development, notably along Bryant and West Utica Streets. Notice here that, while indicated on earlier maps, north-south routes such as Ashland Avenue were surveyed but not established, publicly-opened roads. Courtesy ancestry.com

United States Department of the Interior  
National Park Service

National Register of Historic Places  
Continuation Sheet

Section 11 Page 18

ELMWOOD HISTORIC DISTRICT (EAST)  
Name of Property  
Erie County, New York  
County and State



Detail, "Parts of the Eleventh and Twelfth Ward" from the Hopkins Atlas (1872)

North is at the left of this image. The approximate boundaries of the Elmwood Historic District (East) in red and Elmwood Historic District (West) in black are superimposed on this map, which highlights property ownership in 1872. This portion shows the northern area of the district, which remained large farm lots. At the time of this map, Elmwood Avenue only extended as far north as Delavan. Courtesy ancestry.com

United States Department of the Interior  
National Park Service

National Register of Historic Places  
Continuation Sheet

Section 11 Page 19

ELMWOOD HISTORIC DISTRICT (EAST)  
Name of Property  
Erie County, New York  
County and State



**Geo. W. Reese's New Map of the City of Buffalo (1876)**

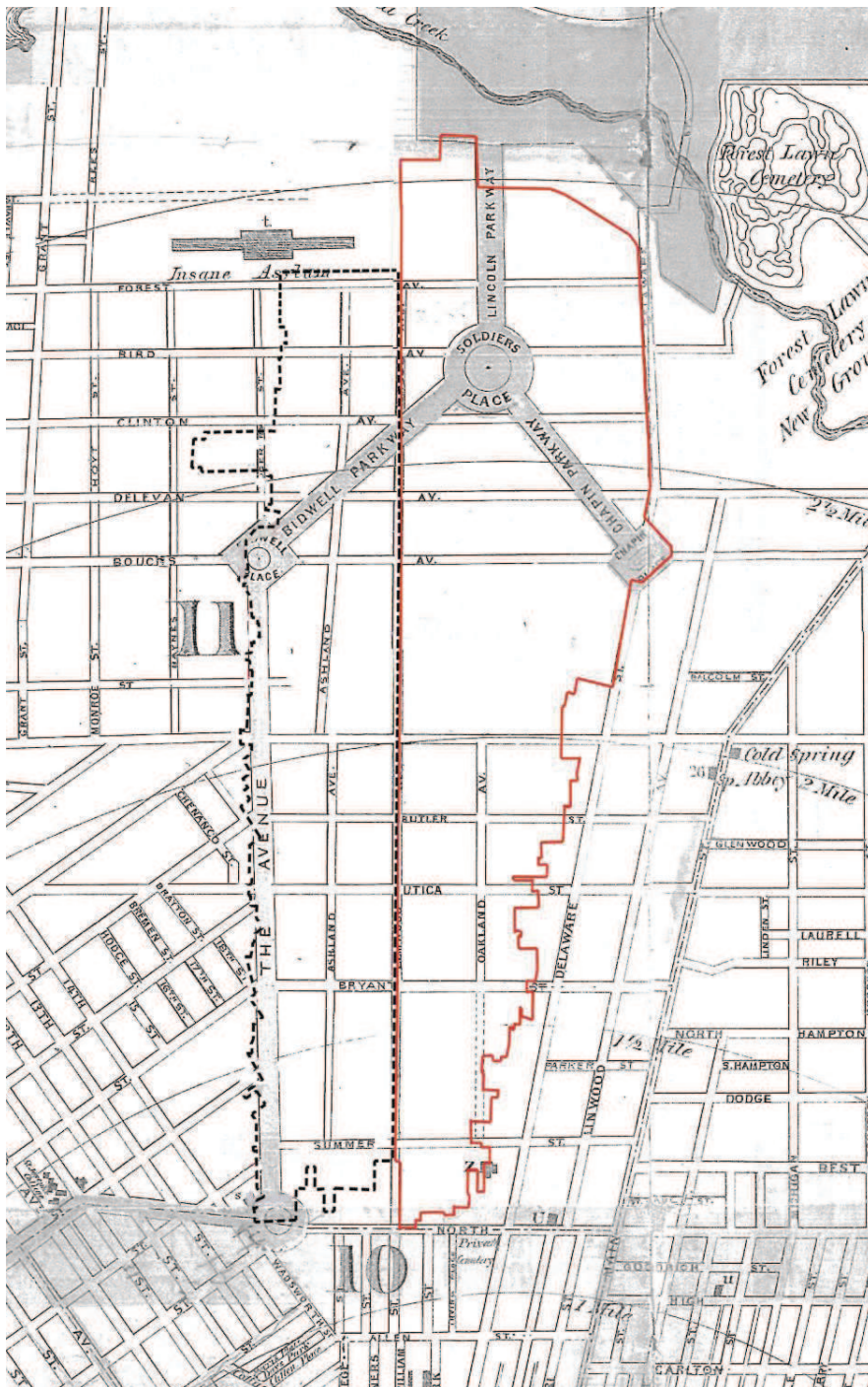
The rough boundaries of the Elmwood Historic District (East) in red and Elmwood Historic District (West) in gray, have been identified in context to the developing street pattern. Courtesy BECPL.

United States Department of the Interior  
National Park Service

National Register of Historic Places  
Continuation Sheet

Section 11 Page 20

ELMWOOD HISTORIC DISTRICT (EAST)  
Name of Property  
Erie County, New York  
County and State



Detail, previous map.

United States Department of the Interior  
National Park Service

National Register of Historic Places  
Continuation Sheet

Section 11 Page 21

ELMWOOD HISTORIC DISTRICT (EAST)

Name of Property

Erie County, New York

County and State



**Detail, “The City of  
Buffalo, N.Y.” (1880)**

(Left is up in this image) The rough boundaries of the Elmwood Historic District (East) are indicated. While not precise, this image shows how vacant and undeveloped the future Elmwood district was as late as the 1880s. Note the much more developed areas surrounding the future district; Black Rock to the west (at bottom), Allentown to the south (right), and Cold Spring to the east (top). Courtesy LOC.

United States Department of the Interior  
National Park Service

National Register of Historic Places  
Continuation Sheet

Section 11 Page 22

ELMWOOD HISTORIC DISTRICT (EAST)  
Name of Property  
Erie County, New York  
County and State



“City of Buffalo” (1880)

From the Beers atlas, courtesy Buffaloresearch.com.

United States Department of the Interior  
National Park Service

National Register of Historic Places  
Continuation Sheet

Section 11 Page 23

ELMWOOD HISTORIC DISTRICT (EAST)

Name of Property

Erie County, New York

County and State



Detail, previous map.

The approximate boundaries of the Elmwood Historic District (East) in red and Elmwood Historic District (West) in black are indicated. Note the size of the large 11<sup>th</sup> Ward, which still in the early 1880s was sparsely settled. New roads have been established, such as Oakland Avenue (now place) and others extended.

United States Department of the Interior  
National Park Service

National Register of Historic Places  
Continuation Sheet

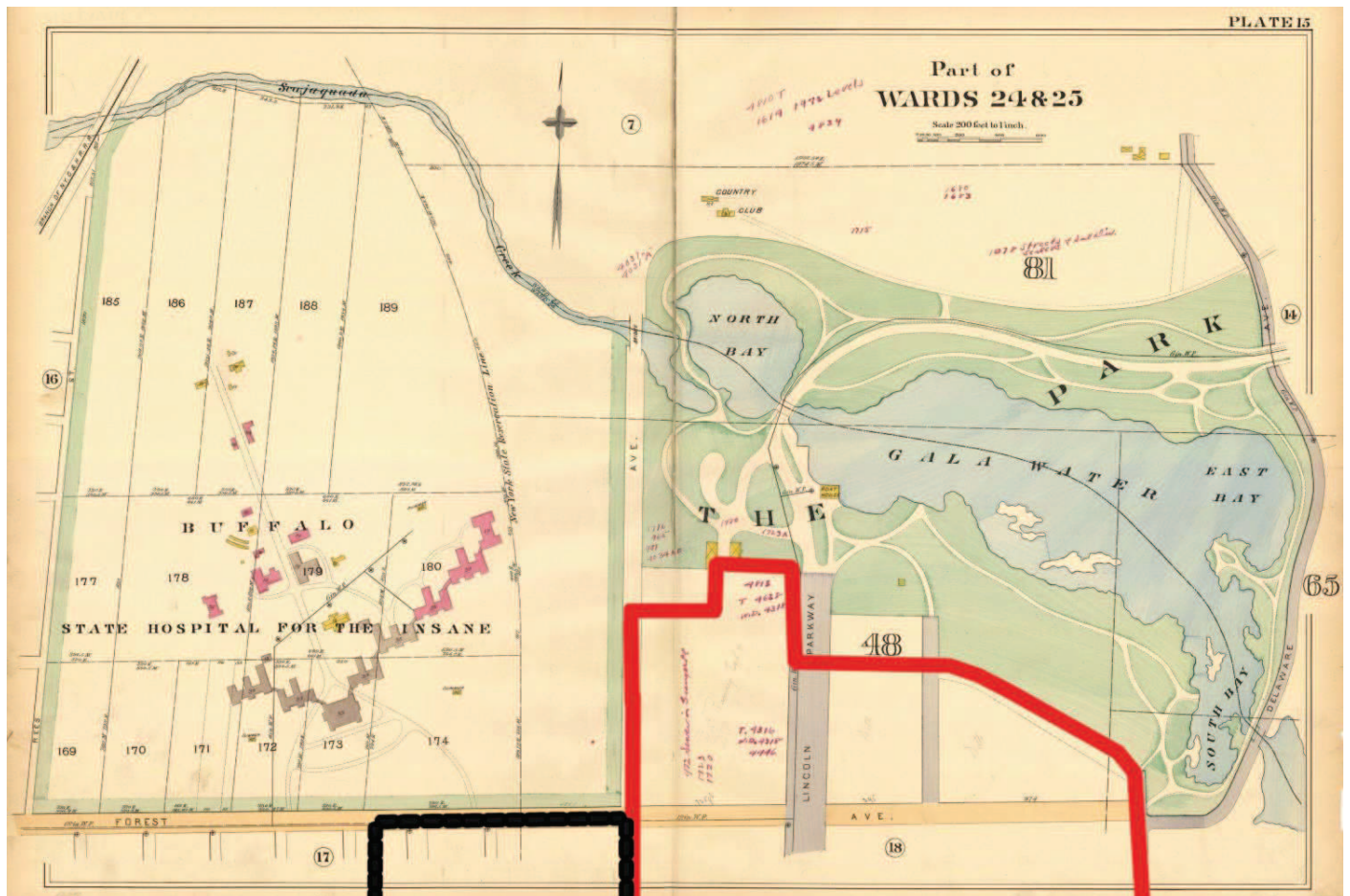
Section 11 Page 24

ELMWOOD HISTORIC DISTRICT (EAST)

Name of Property

Erie County, New York

County and State



“Part of Wards 24 & 25” from the American Atlas Co. (1894)

North is at the top of this map. The approximate boundaries of the Elmwood Historic District (East) in red and Elmwood Historic District (West) in black are here superimposed. Note land in Elmwood East remains fairly undeveloped north of Forest Avenue. Courtesy City of Buffalo.



United States Department of the Interior  
National Park Service

National Register of Historic Places  
Continuation Sheet

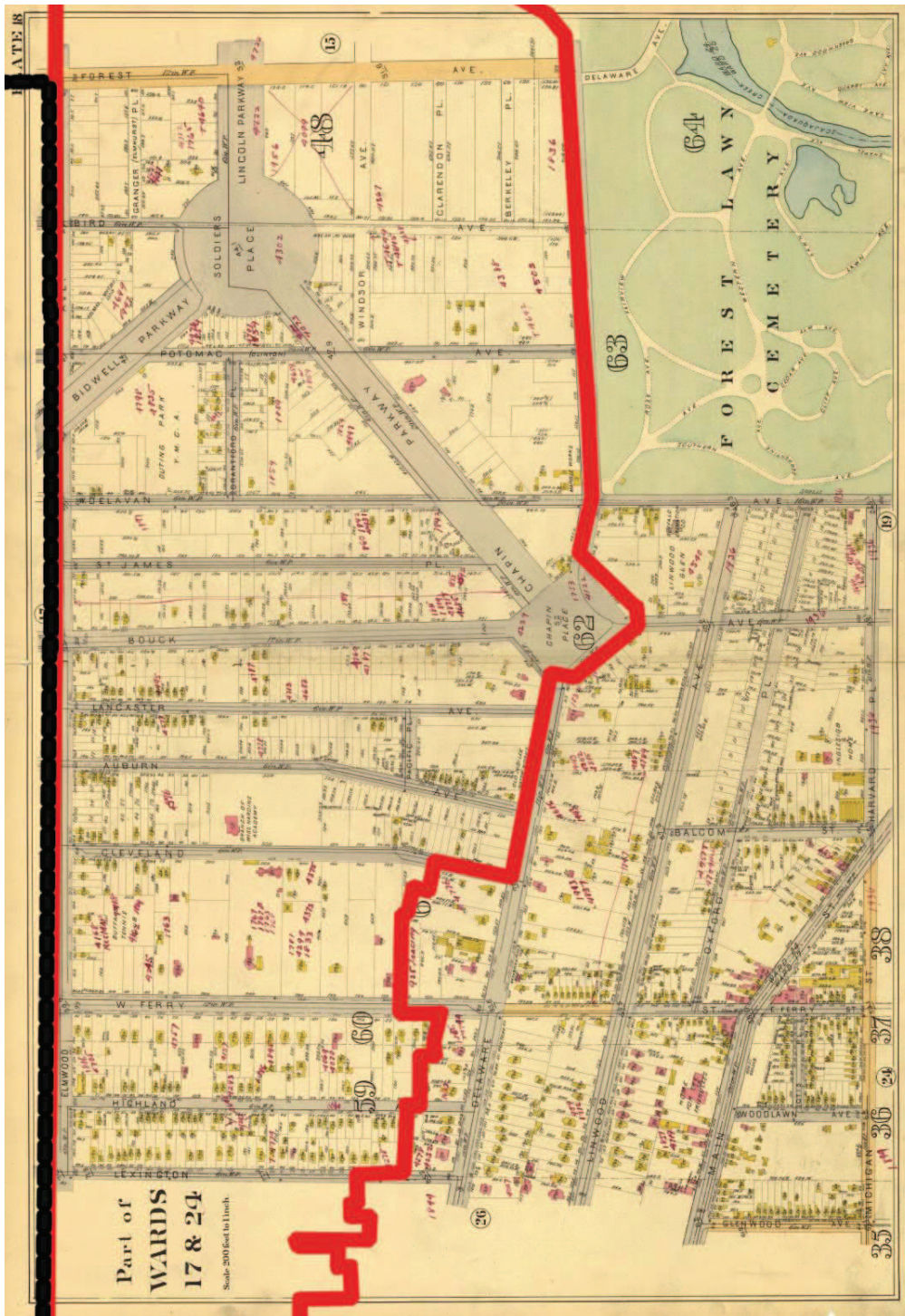
Section 11 Page 25

ELMWOOD HISTORIC DISTRICT (EAST)

Name of Property

Erie County, New York

County and State



**“Part of Wards 17 & 24” from the American Atlas Co. (1894)**

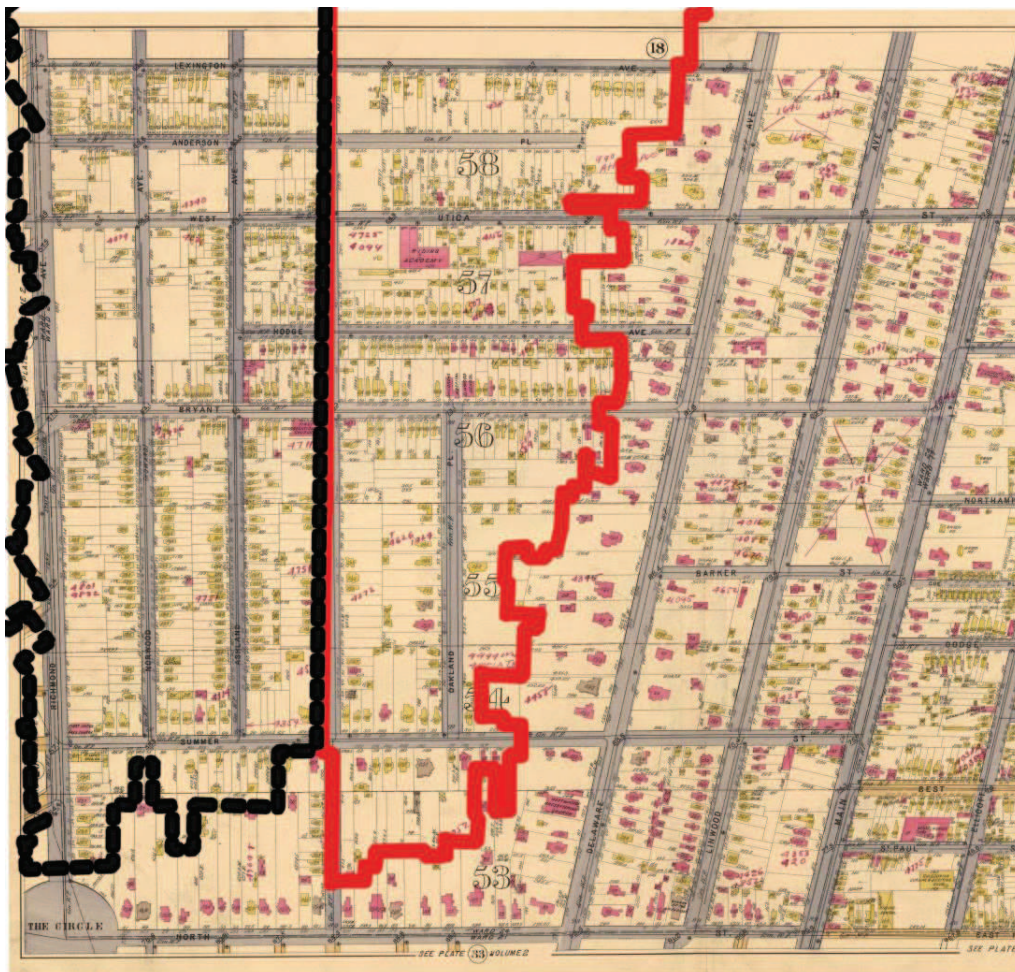
North is at the top of this map. The approximate boundaries of the Elmwood Historic District (East) in red and Elmwood Historic District (West) in black are here superimposed. Note the rapid development in the Elmwood district, especially in the area south of Ferry Street and on west-east streets. Chapin Pkwy and Bidwell Pkwy, the two most expensive streets for construction, remain fairly undeveloped. Courtesy City of Buffalo.

United States Department of the Interior  
National Park Service

National Register of Historic Places  
Continuation Sheet

Section 11 Page 26

ELMWOOD HISTORIC DISTRICT (EAST)  
Name of Property  
Erie County, New York  
County and State



**Portion, “Part of Wards 17 & 24” from the American Atlas Co. (1894)**

Another plate from the previous atlas, showing the southern portion of the Elmwood Historic District (East) in red and Elmwood Historic District (West) in black. Notice here that some streets are very well established as early as the 1890s, such as the southern ends of Bryant Street, Hodge Avenue, and West Utica Street. Notice the difference in the grain of the streets in the Elmwood district in comparison to those large, spacious lots on Delaware Avenue (at right), which contained large mansions of Buffalo’s elite. Courtesy City of Buffalo.

United States Department of the Interior  
National Park Service

National Register of Historic Places  
Continuation Sheet

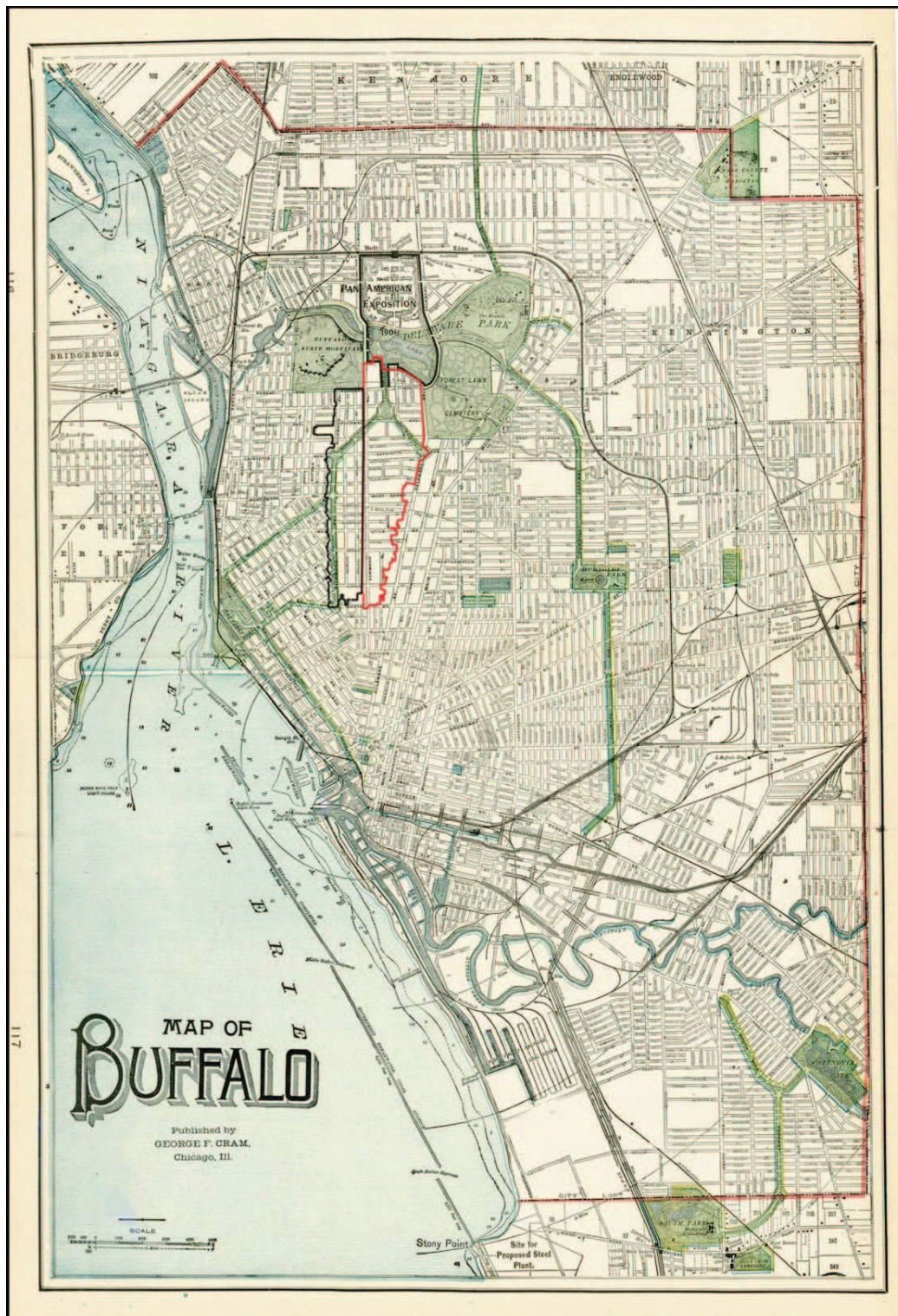
Section 11 Page 27

ELMWOOD HISTORIC DISTRICT (EAST)

Name of Property

Erie County, New York

County and State



**“Map of Buffalo,” by  
George Cram (1901)**

A map of the city of Buffalo, showing the grounds of the Pan-American Exposition (outlined in black). The approximate boundaries of the Elmwood Historic District (East) are also noted in red. This map highlights the Olmsted parks and parkways in and around the city, and also the close proximity of the exposition grounds to the historic district. Courtesy Barry Lawrence Ruderman Antique Maps Inc.

United States Department of the Interior  
National Park Service

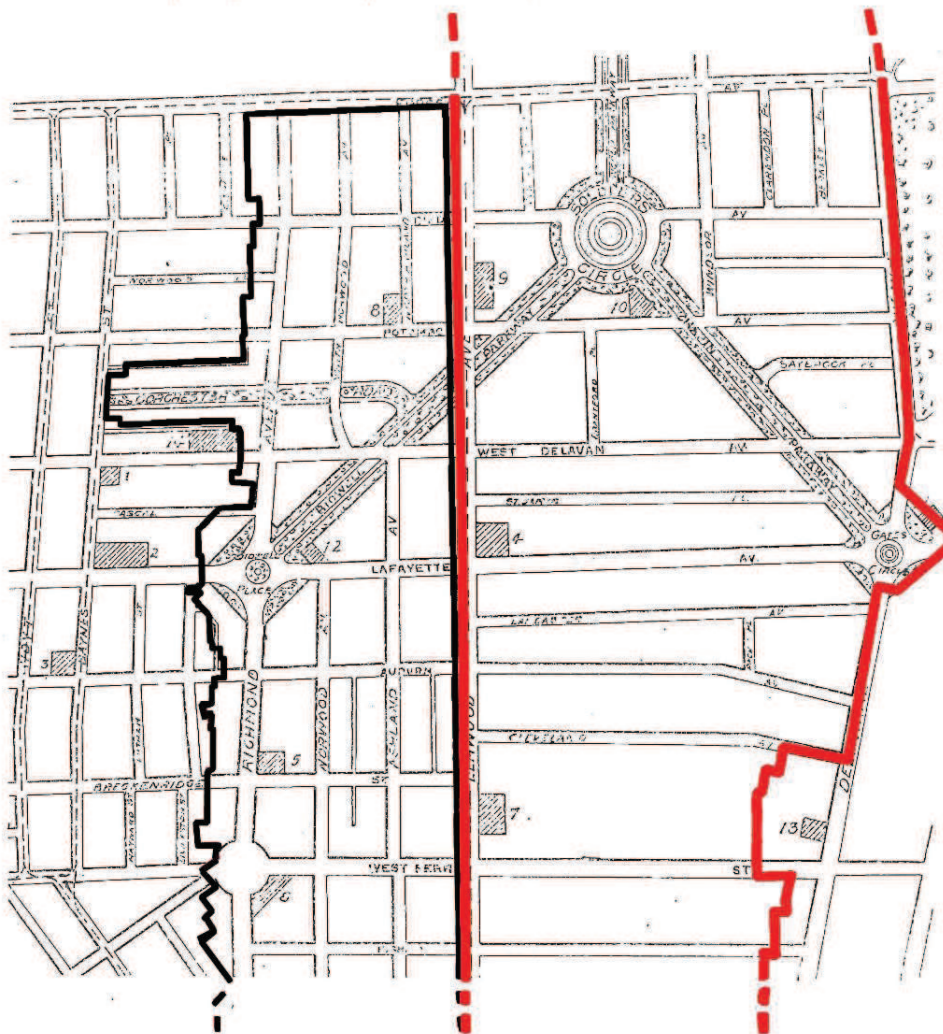
National Register of Historic Places  
Continuation Sheet

Section 11 Page 28

ELMWOOD HISTORIC DISTRICT (EAST)

Name of Property  
Erie County, New York  
County and State

Map of the New Elmwood District.



“Map of the New Elmwood District” from *Greater Buffalo* (1902)

The approximate boundaries of the Elmwood Historic District (East) are superimposed in red and Elmwood Historic District (West) in black. By 1902, the Elmwood district had become an area of Buffalo with a distinct character and identity, as evidenced on this map. The southern area of the Elmwood Historic District (West) was already well developed by the turn of the century, as visible on the map from 1894, so this map focuses on the newly growing northern areas. Some key landmarks are noted on this map, numerous churches and schools. Courtesy BECPL.

- 1—"North" Station Bell Telephone Co.
- 2—Lafayette High School.
- 3—Public School No. 45.
- 4—Lafayette Presbyterian Church.
- 5—Pilgrim Congregational Church.
- 6—Richmond Avenue M. E. Church.
- 7—Public School No. 56.
- 8—The Ashland, Wm. Coatsworth, owner.
- 9—Row of new residences erected by Jno. W. Gibbs, now of the firm of Neiderpruem, Gibbs & Schaaf.

- 10—Melton Manor, W. I. Schmolle, architect.
  - 11—The Woodstock, Chas. Wilson, owner.
  - 12—The Milburn home, where President McKinley died.
  - 13—St. John's Episcopal Church.
  - 14—Row of residences recently erected by Walter D. Putnam.
- Dorchester Road.  
Saybrook Place.

United States Department of the Interior  
National Park Service

National Register of Historic Places  
Continuation Sheet

Section 11 Page 29

ELMWOOD HISTORIC DISTRICT (EAST)  
Name of Property  
Erie County, New York  
County and State



Detail, "Buffalo, Erie Co., N.Y." (1902)

The rough boundaries of the Elmwood Historic District (East) in red and the Elmwood Historic District (West) in black are here indicated, and north is toward the upper left hand corner. This panoramic view shows how rapidly the Elmwood Historic District was developed. Compare to the panoramic view from 1880, created only two decades before.

Courtesy LOC.

United States Department of the Interior  
National Park Service

National Register of Historic Places  
Continuation Sheet

Section 11 Page 30

ELMWOOD HISTORIC DISTRICT (EAST)  
Name of Property  
Erie County, New York  
County and State



**"How Easily Morgan Street Could Be Extended and Elmwood Avenue Widened," (1903)**

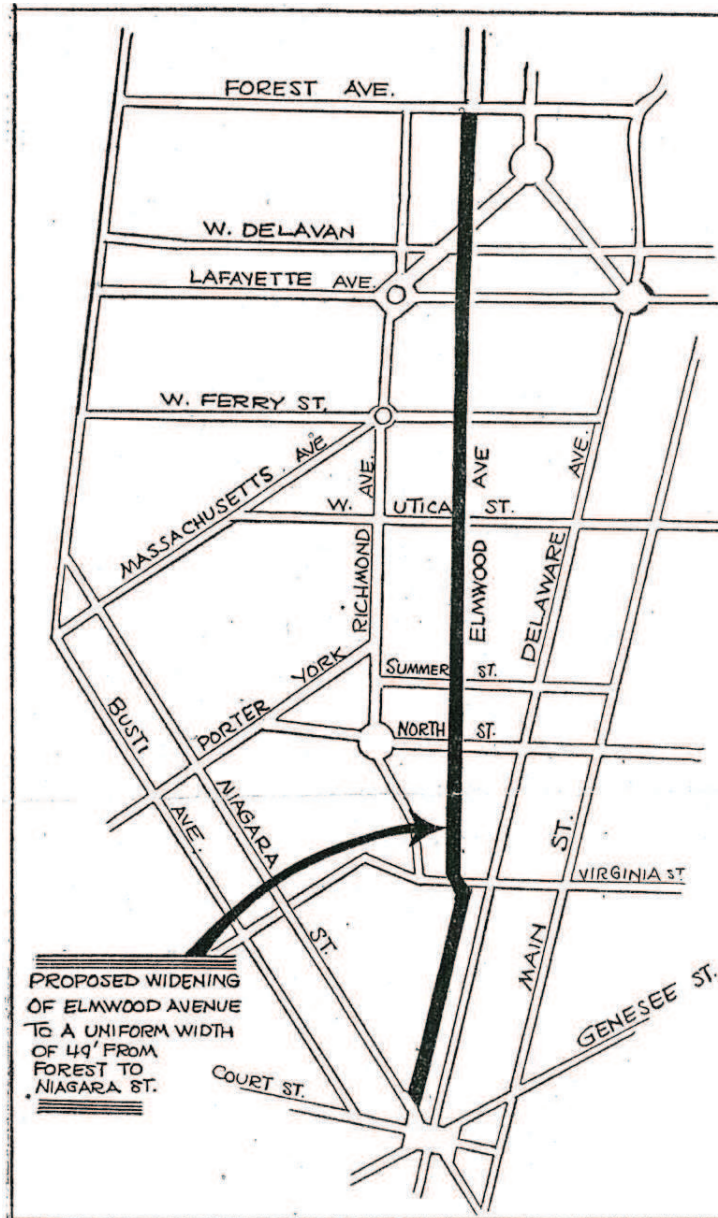
This map highlights what was then proposed for the extension of Elmwood Avenue, linking the Elmwood district with the downtown commercial district of Buffalo. While this project did not occur within the boundaries of the Elmwood Historic District (East), it did have a significant impact on the district. This extension and widening was done to alleviate traffic congestion near Allen Street on Elmwood Avenue, and to allow for a two-lane streetcar line to be installed. Ultimately completed by 1911, this project helped to spur the commercial development of Elmwood Avenue in the 1920s and 1930s. From the *Buffalo Courier Express*, June 22, 1903.

United States Department of the Interior  
National Park Service

National Register of Historic Places  
Continuation Sheet

Section 11 Page 31

ELMWOOD HISTORIC DISTRICT (EAST)  
Name of Property  
Erie County, New York  
County and State



**“Widening of Elmwood is Proposed,” map (1935)**

This map shows the proposed area for widening Elmwood Avenue to better accommodate the increased automobile traffic between the commercial core downtown and the Elmwood district. It marks a shift from the streetcar transportation that developed the area to the auto age which contributed to the overall decline of the city as residents moved to the outlying suburbs.

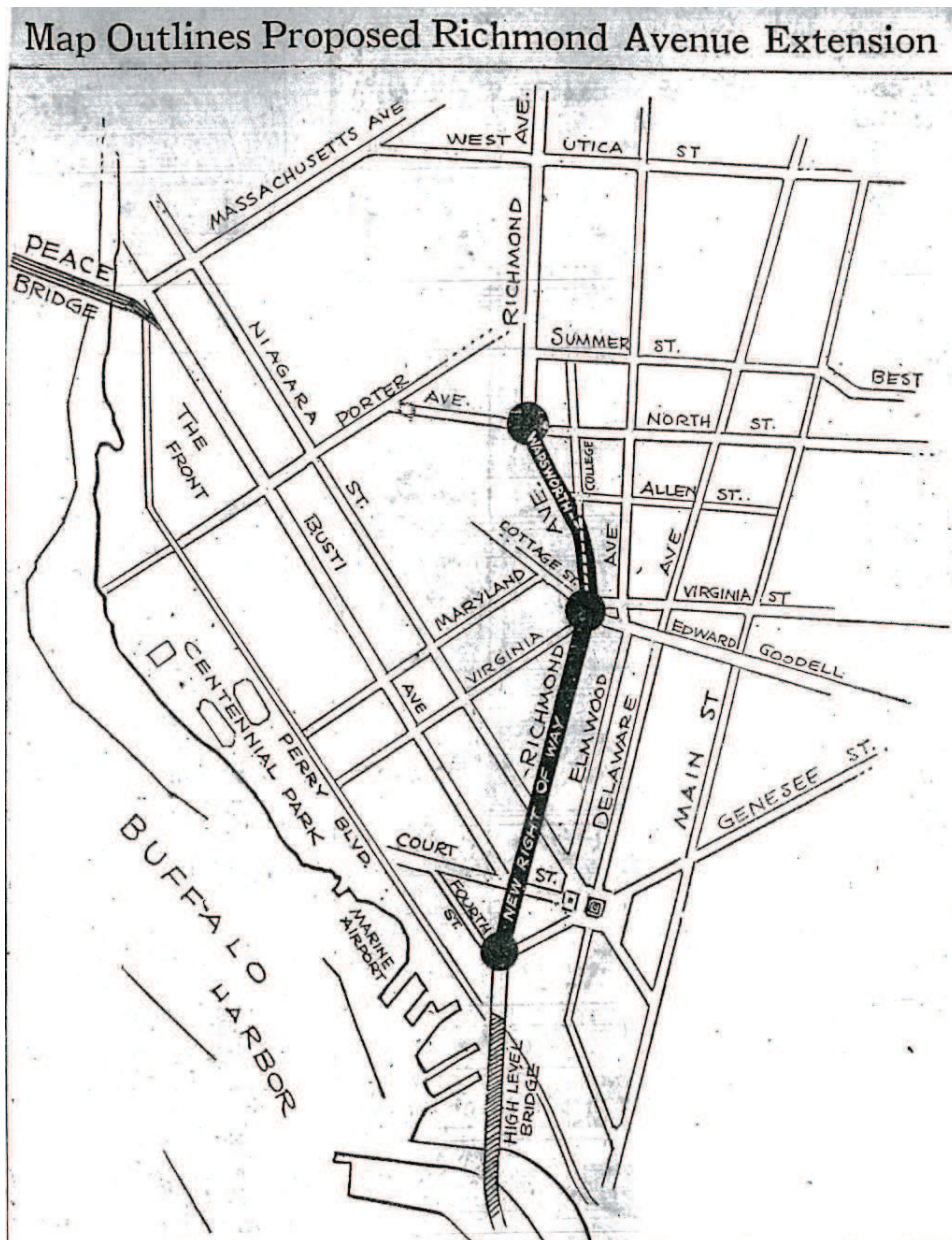
From *The Buffalo News*, "Widening of Elmwood Is Proposed - Plan Would Provide 49-foot Street," August 14, 1935.

United States Department of the Interior  
National Park Service

National Register of Historic Places  
Continuation Sheet

Section 11 Page 32

ELMWOOD HISTORIC DISTRICT (EAST)  
Name of Property  
Erie County, New York  
County and State



**“Map Outlines Proposed Richmond Avenue Extension,” (1935)**

Another idea spurred by the growing auto-centric planning was this concept of extending Richmond Avenue through The Circle (Symphony Circle) to a “high level bridge” to the Hamburg Turnpike. Fortunately, this plan was never realized, as it would have encouraged Richmond Avenue to transform from its stately, Olmsted-designed appearance to a commercial zone like Elmwood and Delaware Avenues.

From *The Buffalo News*, "Map Outlines Proposed Richmond Avenue Extension," August 10, 1935.