

ELMHURST / THE HOMESTEAD

EAST AURORA, NY

Part 1



ELMHURST / THE HOMESTEAD, EAST AURORA, NY

Part 1



CJC/SMCIII Album

Stephen Merrell Clement House on Mill Road, south of the town of East Aurora, New York, purchased in 1894, with more land assembled in 1895 & 1896. This is the earliest photo we have of the house. SMC & CTC had it moved across Mill Road to higher ground to the east



HTC Photo Album

Note the two hip roofs to the left (north) of the picture: the northern-most roof covers a sleeping porch and a porte-cochere: carriages drove under the porch to the barn in the back. The new construction, to the south, covers the old house, up to and including the widow's walk.

*Stephen Clement¹, Frederick Clement², Stephen Mallory Clement³, Stephen Merrell Clement⁴,
Norman, Edith, Merrell, Harold, Marion, Stuart⁵*

ELMHURST / THE HOMESTEAD, EAST AURORA, NY

Part 1



Rufus Frost

Elmhurst c.1900

Newly expanded by architect Stuart Lansing: note the two surviving gables to the left (north). Harold Clement, Sr remembered riding his tricycle around the entire second floor porch roof.



HTC Studio

Lantern slide c.1900

*Stephen Clement¹, Frederick Clement², Stephen Mallory Clement³, Stephen Merrell Clement⁴,
Norman, Edith, Merrell, Harold, Marion, Stuart⁵*

ELMHURST / THE HOMESTEAD, EAST AURORA, NY

Part 1



CTC/SMCIII photo album

Family Portrait c. 1900



Photo CJC/SMCIII Album

*Stephen Clement¹, Frederick Clement², Stephen Mallory Clement³, Stephen Merrell Clement⁴,
Norman, Edith, Merrell, Harold, Marion, Stuart⁵*

ELMHURST / THE HOMESTEAD, EAST AURORA, NY

Part 1



Photo CJC/SMCIII Photo Album

Front Porch of Elmhurst c. 1900, looking north. Later the family could see the tall Rand Building, on Lafayette square in downtown Buffalo, from the porch.



CTC Grandchildren's Album

*Stephen Clement¹, Frederick Clement², Stephen Mallory Clement³, Stephen Merrell Clement⁴,
Norman, Edith, Merrell, Harold, Marion, Stuart⁵*



HTC Sr

Family Tree c.1900: NPC, CTC, MC, SHC, SMC2 and SMC, jr, HTC seated below.
The bench and tree were located behind the big house, along the Long Drive. This photo
appears to have been taken on the same day as the portrait in front of the house.



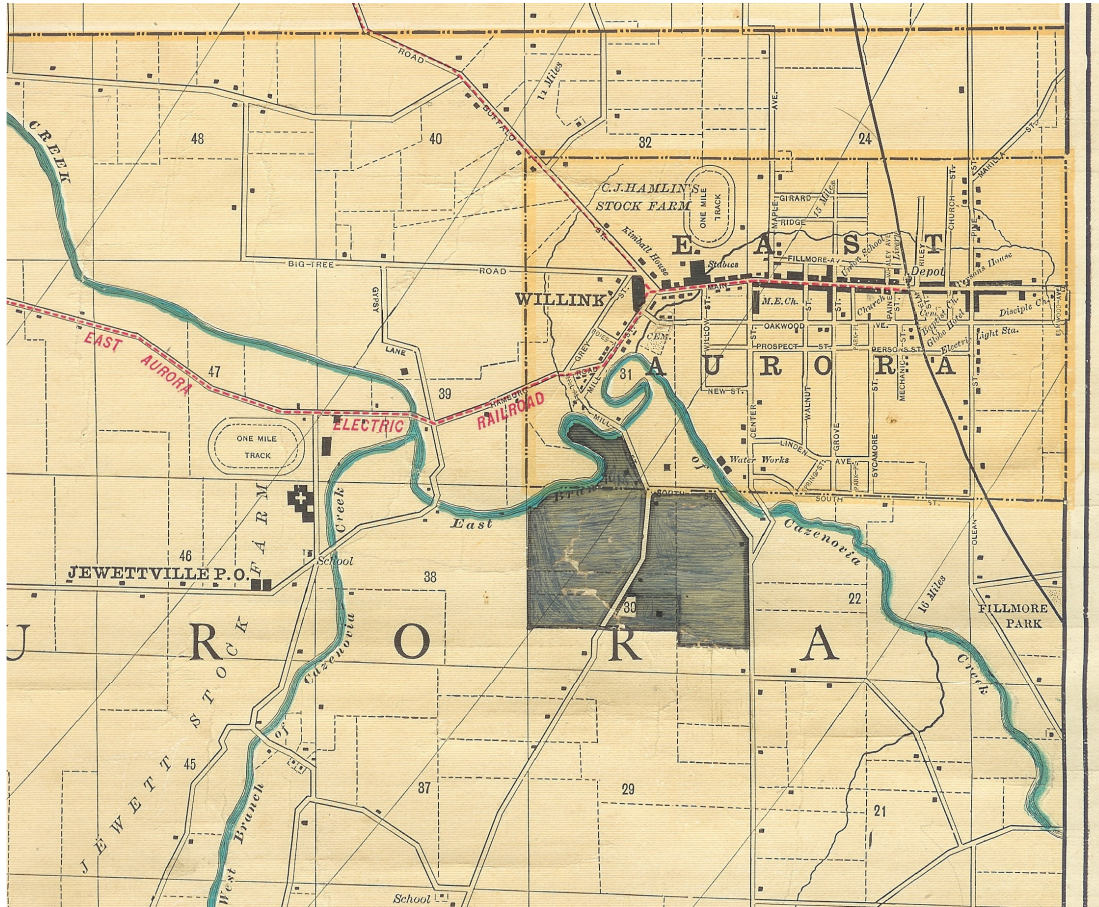
HTC Stereoptican

Family Portrait c.1910: Marion, Gramma Clement, Margaret Hale Clement, SMC2;
Stuart, Harold, Norman holding David H Clement. Merrell flanks David.

*Stephen Clement¹, Frederick Clement², Stephen Mallory Clement³, Stephen Merrell Clement⁴,
Norman, Edith, Merrell, Harold, Marion, Stuart⁵*

ELMHURST / THE HOMESTEAD, EAST AURORA, NY

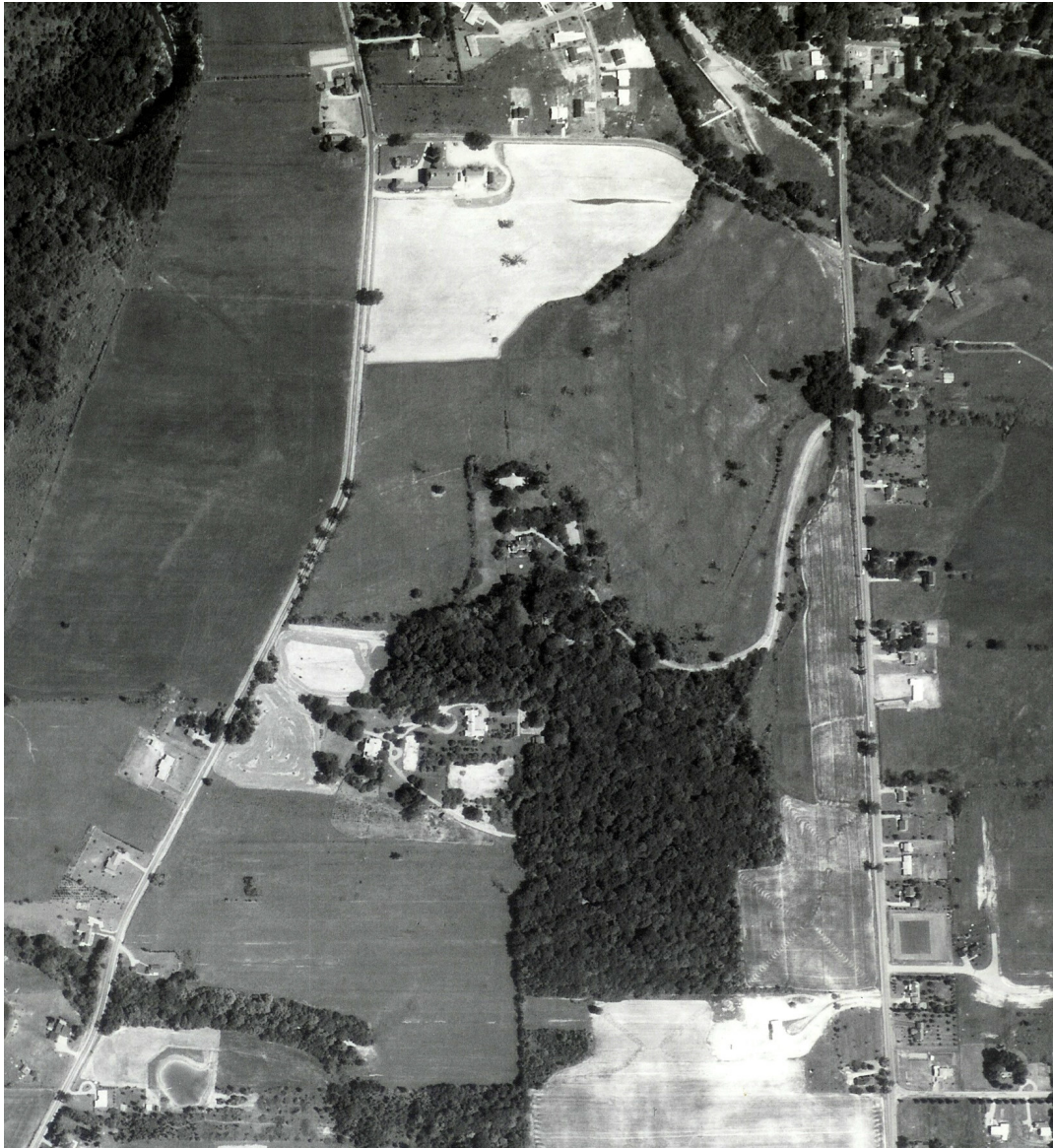
Part 1



HTC Studio

Detail of a large Erie County map, marked by SMC2, to show his property in East Aurora. His land measured approximately 500 acres. Center Street runs true north/south at the right of the property, and Mill Rd runs through the center. The corner of Mill Rd & Beech Rd. is the site of the Elmhurst Special Milk barns. Two old landmarks of East Aurora are indicated on the map: the Cicero J. Hamlin Stock Farm, and the Jewett Stock Farm, with its miraculous mile-long covered trotting race track. The cross-shaped building was a series of barns. Both sites were famous for their trotting horses and races. "Willink" was the original, Holland Land Company, name of East Aurora

*Stephen Clement¹, Frederick Clement², Stephen Mallory Clement³, Stephen Merrell Clement⁴,
Norman, Edith, Merrell, Harold, Marion, Stuart⁵*



Aerial Photo 1966

A larger view of the property: Mill Road to the left, Center Street to the right, Beach/Beech Road (the road signs at either end of the road are in disagreement) across the top. The dairy barn is at the top left of the picture, awash in mown hay. The formal entrance to Elmhurst / The Homestead, was from Mill Rd. The open drive from Center St. serviced Meadowridge, as well as The Homestead, and was laid out to allow a carriage or “station” wagon, coming from meeting the train from Buffalo, to avoid the dusty County road. The “Long Drive” began where the open drive meets the woods: you can almost see where the drive curves through the trees and emerges behind the house. SMC2 reportedly loved bursting out into the sunlight after traveling through the darker woods. The light patch at that point is more mown grass.

*Stephen Clement¹, Frederick Clement², Stephen Mallory Clement³, Stephen Merrell Clement⁴,
Norman, Edith, Merrell, Harold, Marion, Stuart⁵*



Detail of aerial photo of 1966 showing the Homestead & Meadowridge properties.

The Homestead, the shortened version, is a small white square fronted by mowed lawn; the white patch behind, with the circular drive, is the remains of tennis court; the stables are to the right of the house, with another circle in front. South of the stables was an orchard, and behind was a long greenhouse. The gardener's cottage is seen to the right of the orchard, tucked up against the woods. The Meadowridge pool stands out, surrounding sentinels of clipped cedars. Meadowridge itself has a circular drive. The tennis court is to the east, with the Picnic Shelter in the trees to the south of it.

ELMHURST / THE HOMESTEAD, EAST AURORA, NY

Part 1



Photo CJC/SMCIII Album



Photo CJC/SMCIII Album

Note the curtain of ivy, completely filling one bay of the porch.

*Stephen Clement¹, Frederick Clement², Stephen Mallory Clement³, Stephen Merrell Clement⁴,
Norman, Edith, Merrell, Harold, Marion, Stuart⁵*

ELMHURST / THE HOMESTEAD, EAST AURORA, NY

Part 1



Photo CJC/SMCIII Album

Elmhurst from the southeast.



Photo CJC/SMCIII Album

The south façade of Elmhurst, before the formal garden was planted.
Note the early stable building to the right.

*Stephen Clement¹, Frederick Clement², Stephen Mallory Clement³, Stephen Merrell Clement⁴,
Norman, Edith, Merrell, Harold, Marion, Stuart⁵*



SMC2 "Round" Album

Carolyn T. Clement with Harold and Stuart, c.1900. The early stable sits to the right. The structure on the ground behind them is the original cupola of the larger stable, which was deemed unattractive, and the present one was installed.

*Stephen Clement¹, Frederick Clement², Stephen Mallory Clement³, Stephen Merrell Clement⁴,
Norman, Edith, Merrell, Harold, Marion, Stuart⁵*



Xerox CTC/SMCHH Album

View of the house from the formal garden, looking north.
The house was painted yellow with white trim.



CAC Album

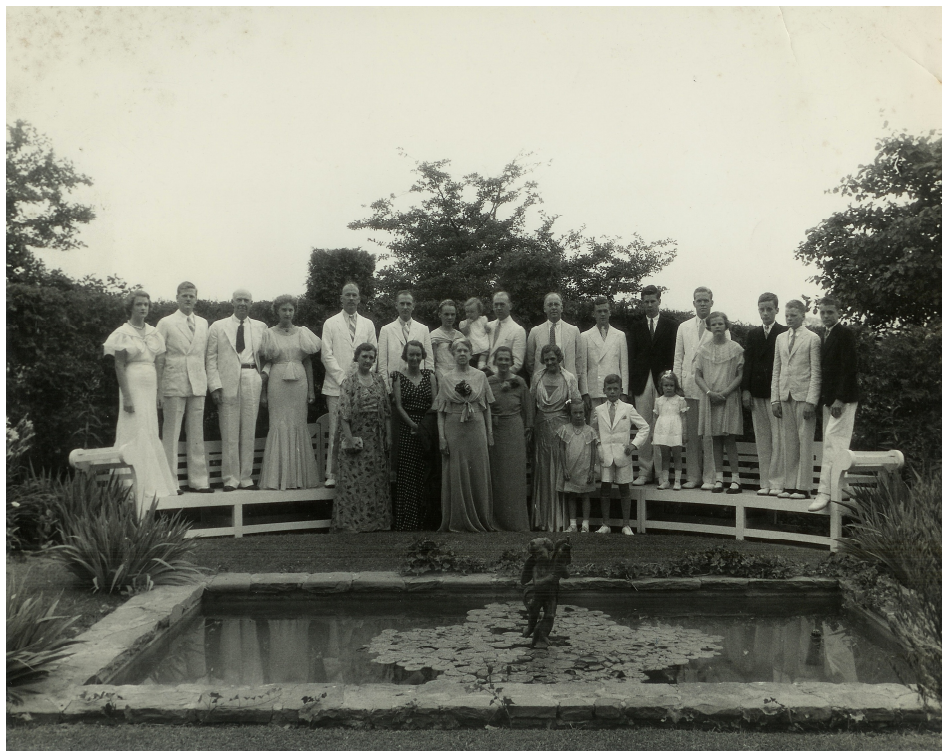
Harold, Jr in the formal garden c.1919.

*Stephen Clement¹, Frederick Clement², Stephen Mallory Clement³, Stephen Merrell Clement⁴,
Norman, Edith, Merrell, Harold, Marion, Stuart⁵*



HTCjr Kodak

View of the formal garden from the north. The bench is an elongated version of the Lutyens ("Luch-ens") bench, designed by Sir Edwin Lutyens, an English architect & garden designer. Merrell Clement, as an architect, would have had access to woodworkers who could stretch the original, shorter, design.



HTC Photo Album

Family portrait taken at Gramma Clement's July 19th birthday: possibly her 70th in 1931. The bench is being put to the test.

*Stephen Clement¹, Frederick Clement², Stephen Mallory Clement³, Stephen Merrell Clement⁴,
Norman, Edith, Merrell, Harold, Marion, Stuart⁵*



CTC's grandchildren's book

The formal garden was laid out by landscape architect Warren H. Manning (1860-1938), a successor to Frederick Law Olmsted, and an alumnus of that office. He also designed a garden for 786 Delaware Avenue, in 1900.

*Stephen Clement¹, Frederick Clement², Stephen Mallory Clement³, Stephen Merrell Clement⁴,
Norman, Edith, Merrell, Harold, Marion, Stuart⁵*

ELMHURST / THE HOMESTEAD, EAST AURORA, NY

Part 1



Photo CJC/SMCIII Album



Photo CJC/SMCIII Album

The garden from the second floor of the house.

*Stephen Clement¹, Frederick Clement², Stephen Mallory Clement³, Stephen Merrell Clement⁴,
Norman, Edith, Merrell, Harold, Marion, Stuart⁵*