

ELMHURST / THE HOMESTEAD

EAST AURORA, NY

Part 2



CTC Grandchildren's Album

The formal entrance gates on Mill Road. A similar gateway greeted the visitor at the Center Street entrance.



CTC Grandchildren's Album

The house was called The Homestead sometime after 1905. The second floor porch has been removed from between the pairs of columns, at the suggestion of Merrell Clement, architect.

Peter W. Clement 4 Waterbury Avenue Madison, CT 06443  
Clement Day July 2011  
10b-SMC EA Scrapbook 2



ELMHURST / THE HOMESTEAD

EAST AURORA, NY

Part 2



CTC Grandchildren's Album



CTC Grandchildren's Album

The tennis court and the rear of the house from the east.

*Stephen Clement<sup>1</sup>, Frederick Clement<sup>2</sup>, Stephen Mallory Clement<sup>3</sup>, Stephen Merrell Clement<sup>4</sup>,  
Norman, Edith, Merrell, Harold, Marion, Stuart<sup>5</sup>*



ELMHURST / THE HOMESTEAD  
EAST AURORA, NY  
Part 2



CTC Grandchildren's Album

View north across the entrance hall to the Dining Room to the Library/Study at the end, overlooking the Porte-Cochère. The sconce in the Dining Room is one of several now owned by different branches of the family.



CTC Grandchildren's Album

*Stephen Clement<sup>1</sup>, Frederick Clement<sup>2</sup>, Stephen Mallory Clement<sup>3</sup>, Stephen Merrell Clement<sup>4</sup>,  
Norman, Edith, Merrell, Harold, Marion, Stuart<sup>5</sup>*



ELMHURST / THE HOMESTEAD  
EAST AURORA, NY  
Part 2



CTC Grandchildren's Album

The silver tray on the sideboard commemorates Grandma Clement's 80<sup>th</sup> birthday in 1941. Each of her children & many of her grandchildren's signatures were engraved on the tray.



Peter Clement

*Stephen Clement<sup>1</sup>, Frederick Clement<sup>2</sup>, Stephen Mallory Clement<sup>3</sup>, Stephen Merrell Clement<sup>4</sup>,  
Norman, Edith, Merrell, Harold, Marion, Stuart<sup>5</sup>*  
10b-SMC2 EA Scrapbook 2



ELMHURST / THE HOMESTEAD  
EAST AURORA, NY  
Part 2



CTC Grandchildren's Album

Grandma's Bedroom



CTC Grandchildren's Album

Grandma's Dressing Room

*Stephen Clement<sup>1</sup>, Frederick Clement<sup>2</sup>, Stephen Mallory Clement<sup>3</sup>, Stephen Merrell Clement<sup>4</sup>,  
Norman, Edith, Merrell, Harold, Marion, Stuart<sup>5</sup>*



ELMHURST / THE HOMESTEAD  
EAST AURORA, NY  
Part 2



Photo CJC/SMCIII Album

The first Living Room. Compare the French door to the right with the later photograph below.



CTC Grandchildren's Album

The photo portrait of SMC now hangs in the 786 Delaware Library. The landscape painting was done by Merrell Clement as part of his architectural training. The wooden chair is "Uncle Ozias' Chair," referring to Stephen Mallory Clement's brother. It may be the chair that was made from wood salvaged from the iconic Yale Fence: wood from its partial removal was sold to alumni.

*Stephen Clement<sup>1</sup>, Frederick Clement<sup>2</sup>, Stephen Mallory Clement<sup>3</sup>, Stephen Merrell Clement<sup>4</sup>,  
Norman, Edith, Merrell, Harold, Marion, Stuart<sup>5</sup>*



ELMHURST / THE HOMESTEAD  
EAST AURORA, NY  
Part 2



Xerox CJC/SMCIII Album

The Living Room. The three windows face west, and are visible in the Front Porch photo.



CTC Grandchildren's Album

A later photo of the Living Room. On the piano are photographs of CTC, Stevie Merrell, and Gordon. Stu & Pres are on the window sill, along with Petie. Another of Merrell's garden fantasy paintings hangs behind the piano.

*Stephen Clement<sup>1</sup>, Frederick Clement<sup>2</sup>, Stephen Mallory Clement<sup>3</sup>, Stephen Merrell Clement<sup>4</sup>,  
Norman, Edith, Merrell, Harold, Marion, Stuart<sup>5</sup>*





HTC Album

Grandma Clement's 75<sup>th</sup> birthday, 19 July 1936

Norman, Jr, Stuart, Sr., Stuart, Jr., Norman, Sr., David, Alexander Tener, George Tener II, Merrell,  
Harold, Jr., Harold, Sr., S. Prescott, Laurence  
Patricia/Carolyn, Margaret B, Margaret H., Carolyn Tripp Clement, Jean D., Constance A., Marion  
Claire, Constance2, Mary Bush.

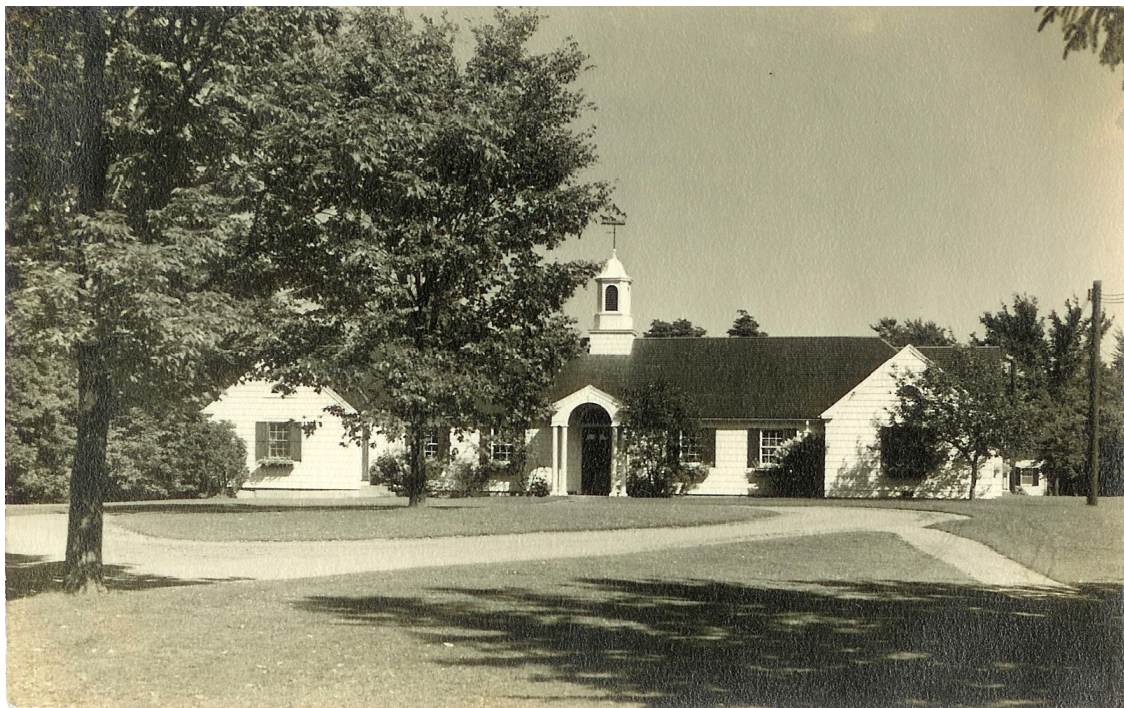
*Stephen Clement<sup>1</sup>, Frederick Clement<sup>2</sup>, Stephen Mallory Clement<sup>3</sup>, Stephen Merrell Clement<sup>4</sup>,  
Norman, Edith, Merrell, Harold, Marion, Stuart<sup>5</sup>*



ELMHURST / THE HOMESTEAD

EAST AURORA, NY

Part 2



CTC Grandchildren's Album

The stables/garage with Merrell's revised cupola. The chauffeur, Bates, lived in the apartment to the right. There was a machine shop to the left and six car bays in between.



Peter Clement c.1970

The stable's charming plowman weathervane.

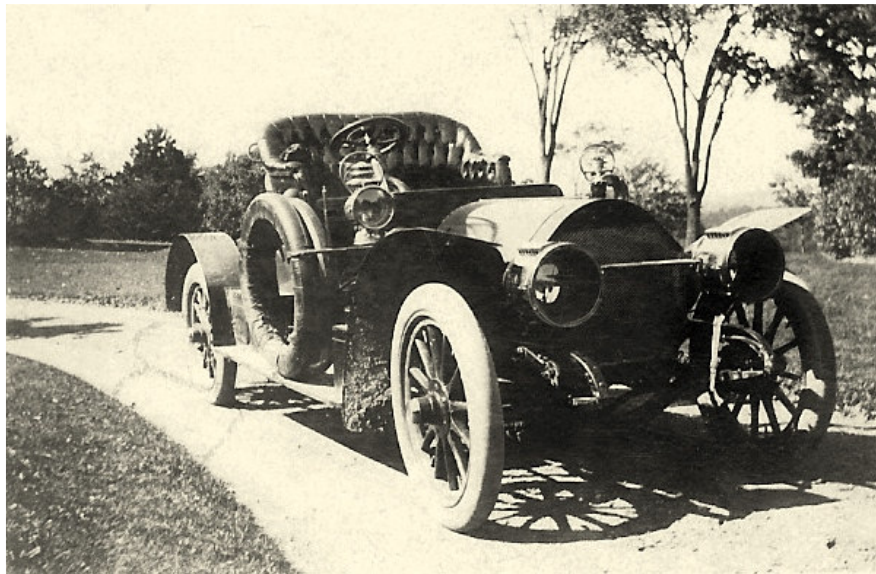
*Stephen Clement<sup>1</sup>, Frederick Clement<sup>2</sup>, Stephen Mallory Clement<sup>3</sup>, Stephen Merrell Clement<sup>4</sup>,  
Norman, Edith, Merrell, Harold, Marion, Stuart<sup>5</sup>*





SMC1 Strongbox

An early use of the term automobile. The horses are looking a little thin.



HTC Album

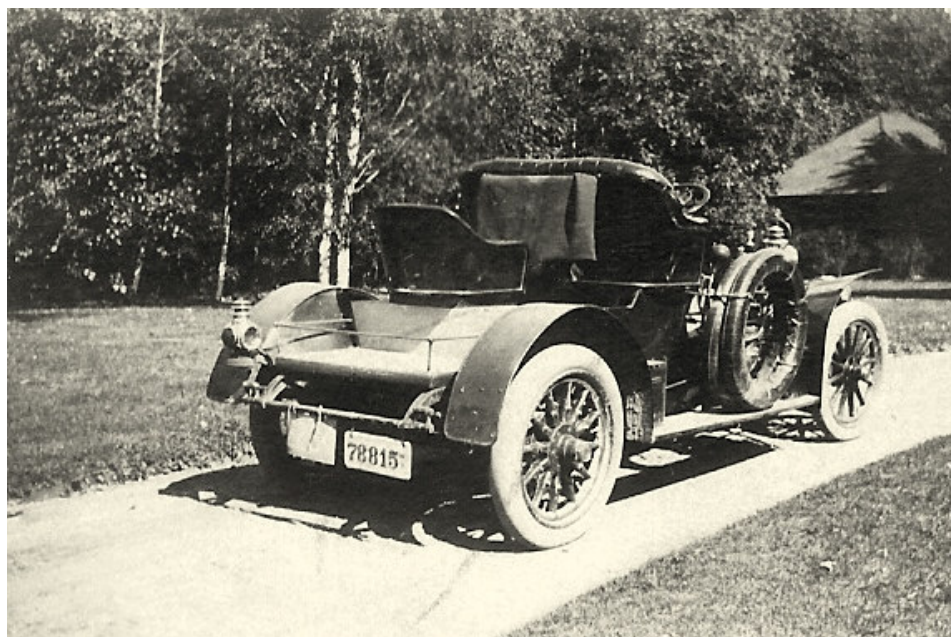
A later application: Stephen M. Clement's Locomobile c.1905. George Tener recalled the car preserved "beneath its caul of gauze" in the garage.

Harold Clement's 1905 diary: "Mon. Apr. 3rd: Stuart's birthday. Stuart got his presents before breakfast. Merrell went for a ride in Raymond Albright's Locomobile. *Father ordered a Locomobile for us.* He & Merrell went to Pennsylvania to see some ore mines."

*Stephen Clement<sup>1</sup>, Frederick Clement<sup>2</sup>, Stephen Mallory Clement<sup>3</sup>, Stephen Merrell Clement<sup>4</sup>,  
Norman, Edith, Merrell, Harold, Marion, Stuart<sup>5</sup>*



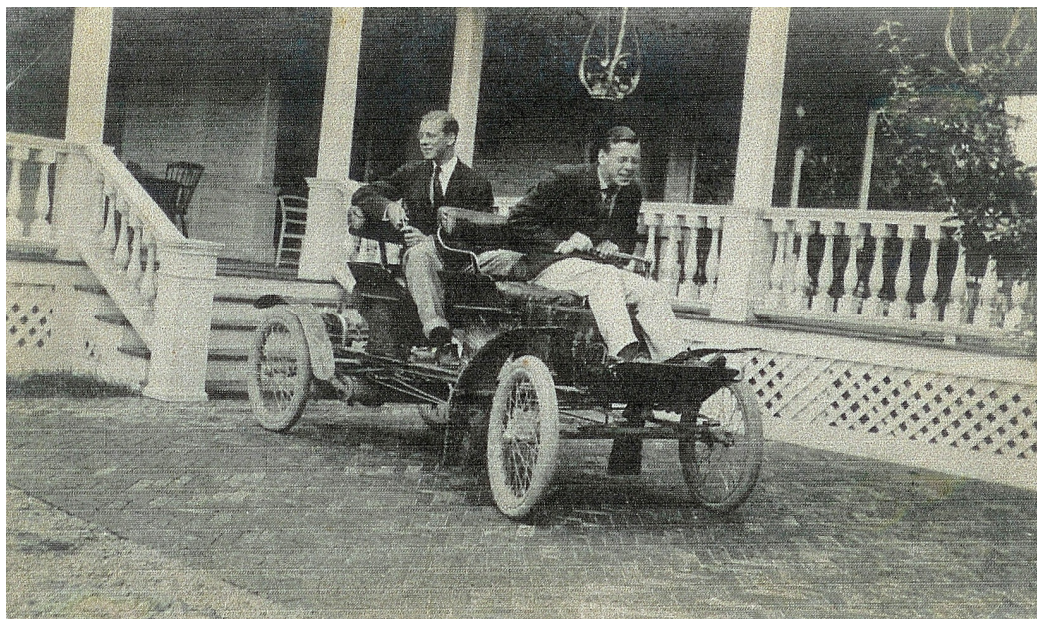
ELMHURST / THE HOMESTEAD  
EAST AURORA, NY  
Part 2



HTC Album

The Locomobile.

Harold Clement's 1905 diary: "Thu. Jul 13th: *The new car arrived.....*"

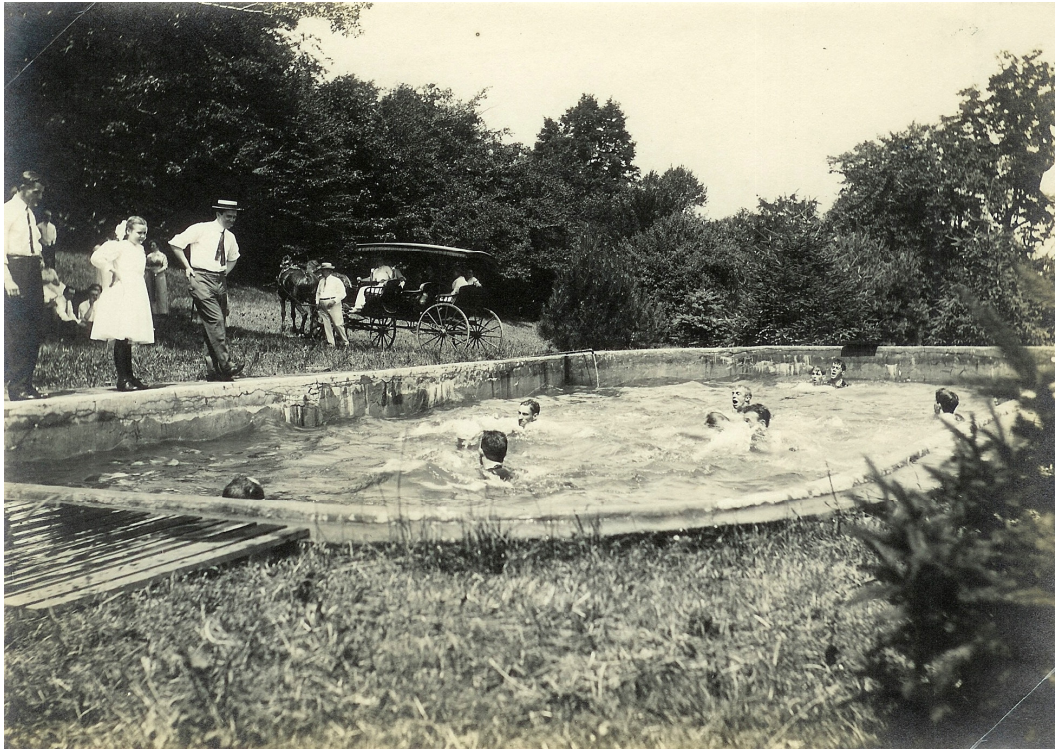


HTC Album

Merrell & Norman in the Orient Buckboard, which was said to be one of the first automobiles in Buffalo. Steered with a tiller, it was a very close cousin of the horse-drawn buckboard. HTC recalled making their own license plate: white patent leather, with silver numbers. To their right is a back porch, and beyond it, the porte-cochere.

*Stephen Clement<sup>1</sup>, Frederick Clement<sup>2</sup>, Stephen Mallory Clement<sup>3</sup>, Stephen Merrell Clement<sup>4</sup>,  
Norman, Edith, Merrell, Harold, Marion, Stuart<sup>5</sup>*





Marine Bank Outing Album

The Old Pool was set near the Long Drive, as pools weren't yet seen as an ornament, and for good reason: the pool was filled by rain water, it had no filtration, it featured satiny green walls and was home to as many toads as swimmers. SMC2 is seen silhouetted against the horses. Harold is under the diving board, and Marion stands by the pool edge. The occasion was a retirement picnic honoring Frank Jewett, an employee of the Bank.



HTC Stereoptican

SMC and friend pitching hay in front of The Homestead. Under similar circumstances he was struck by a heart attack, signaling a two-year battle with heart disease.

*Stephen Clement<sup>1</sup>, Frederick Clement<sup>2</sup>, Stephen Mallory Clement<sup>3</sup>, Stephen Merrell Clement<sup>4</sup>,  
Norman, Edith, Merrell, Harold, Marion, Stuart<sup>5</sup>*



Elmhurst,  
East Aurora, N.Y.

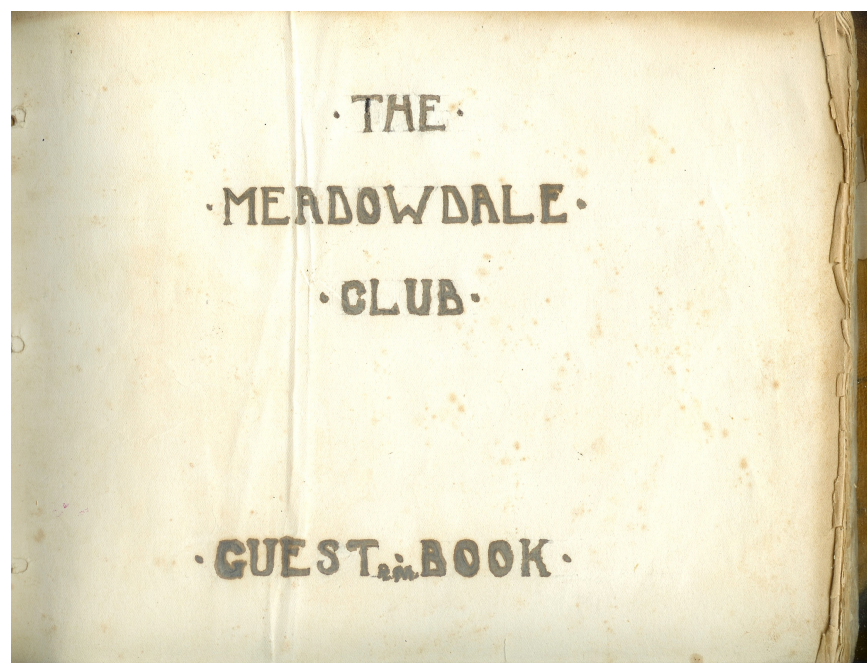
My dear friends,  
Mr + Mrs. Edward Michael,  
Remembering with great  
pleasure the happy time  
I had with you a year  
ago: permit me to send  
you my year old thanks  
with my most cordial  
greetings and best wishes.  
I am feeling quite well  
and we are all enjoying  
our family visit together.  
We all think and speak  
of you and your guests to  
day. We have the pleasant

HTC Album

A 1904 letter from Augustus F Tripp to the Edward Michaels, neighbors on  
Delaware Avenue of AFT & both Stephen Clements.

Stephen Clement<sup>1</sup>, Frederick Clement<sup>2</sup>, Stephen Mallory Clement<sup>3</sup>, Stephen Merrell Clement<sup>4</sup>,  
Norman, Edith, Merrell, Harold, Marion, Stuart<sup>5</sup>

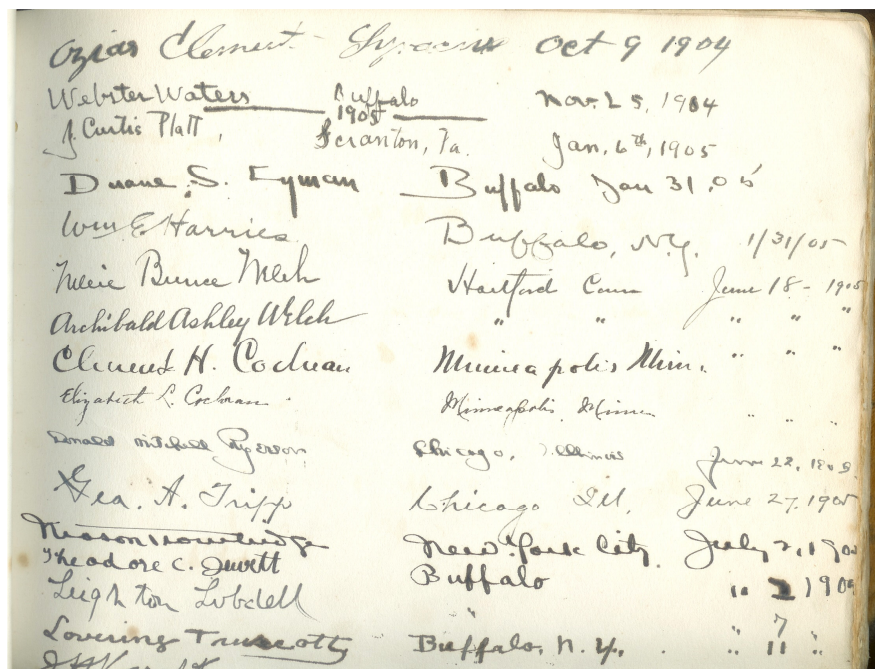




HTC Archive

Norman Clement enlisted his brothers in the task of building a Clubhouse in the woods, south of the Long Drive. The guest book was made by the Roycrofters, in East Aurora.

It was covered with Lincoln Green suede, and bound with rawhide. The pages were made of blotting paper, so the signer had to be quick about it.



HTC Archive

Note Uncle Ozias' visit. Curtis Platt was a roommate of Merrell's, and a client for a beautiful house in Waverly, PA. Geo. A Tripp was Grandma Clement's brother, who ran the Sidney Shepard Co., in Chicago.

Stephen Clement<sup>1</sup>, Frederick Clement<sup>2</sup>, Stephen Mallory Clement<sup>3</sup>, Stephen Merrell Clement<sup>4</sup>,  
Norman, Edith, Merrell, Harold, Marion, Stuart<sup>5</sup>



ELMHURST / THE HOMESTEAD  
EAST AURORA, NY  
Part 2



Peter W Clement c.1969

The Homestead was sold after Grandma Clement's death in 1943. The new owner removed the original north (left) portion of the house, making it more symmetrical, and presumably more manageable. The Collie (not Laddie) arrived, unbidden, to dress-up the photograph.

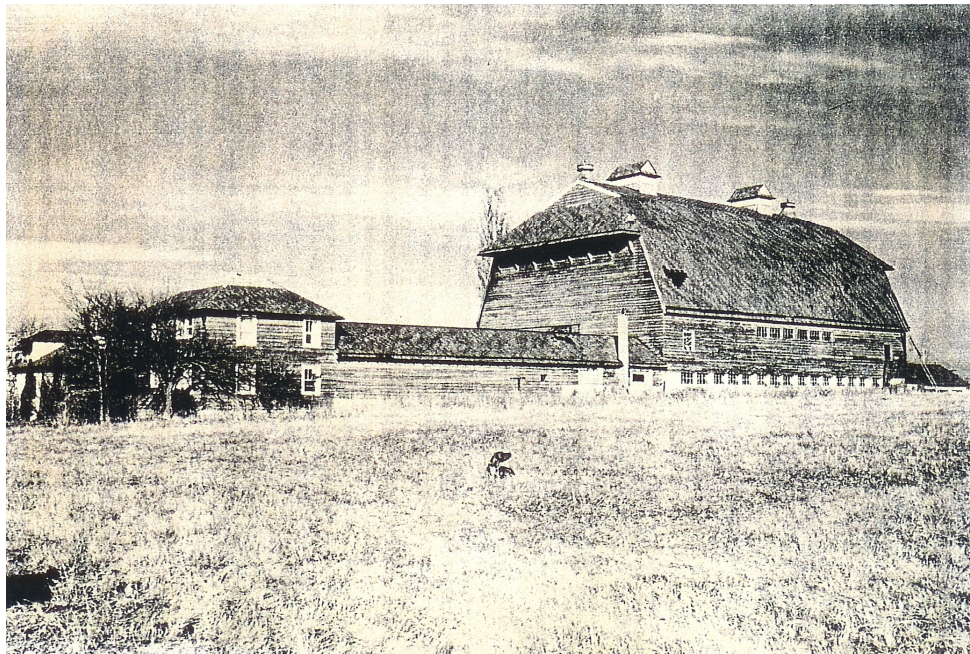
*Stephen Clement<sup>1</sup>, Frederick Clement<sup>2</sup>, Stephen Mallory Clement<sup>3</sup>, Stephen Merrell Clement<sup>4</sup>,  
Norman, Edith, Merrell, Harold, Marion, Stuart<sup>5</sup>*



## ELMHURST / THE HOMESTEAD

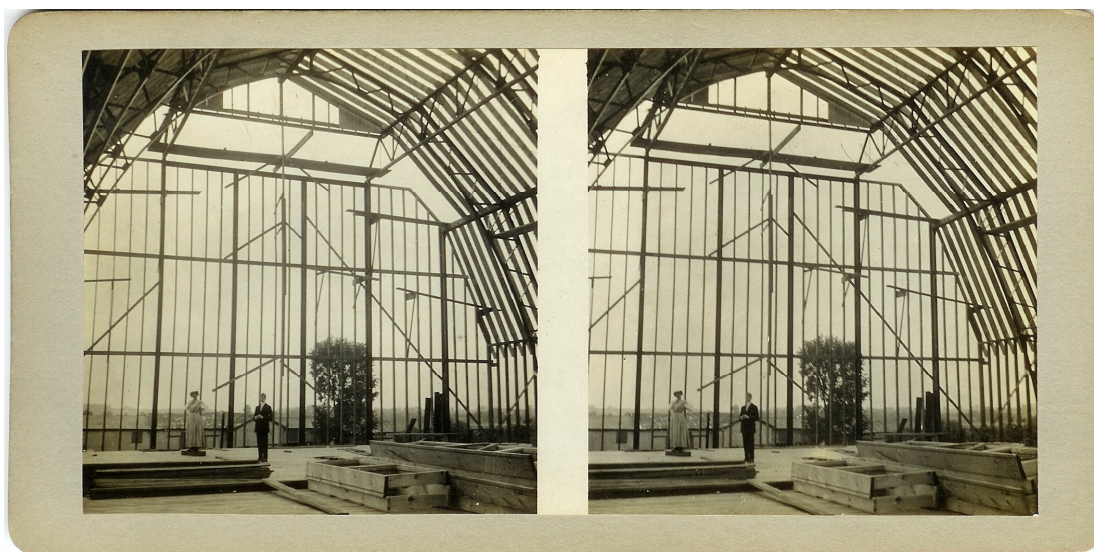
EAST AURORA, NY

### Part 2



East Aurora Historical Society

The Elmhurst Special Milk Co. barn, at the corner of Mill & Beech Roads, designed in 1912 by Edward B. Green, the designer of 786 Delaware Ave. It measures 100' long, 70 feet wide, and 60 feet high. Sometimes known as the air barn. ESM Co. produced Certified Milk, in the days before pasteurization: the walls of the milking area were whitewashed once a week, and the cows were sponged-down before milking. Elmhurst Special Milk was shipped as far away as Japan.



HTC Studio Photos

A stereopticon slide of the barn under construction.  
When viewed through a stereopticon viewer, the image is seen in 3D.

*Stephen Clement<sup>1</sup>, Frederick Clement<sup>2</sup>, Stephen Mallory Clement<sup>3</sup>, Stephen Merrell Clement<sup>4</sup>,  
Norman, Edith, Merrell, Harold, Marion, Stuart<sup>5</sup>*



ELMHURST / THE HOMESTEAD

EAST AURORA, NY

Part 2



SMC1 Strongbox



SMC1 Strongbox

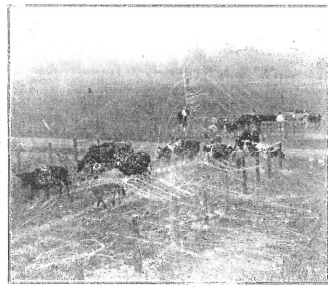
Stephen Clement<sup>1</sup>, Frederick Clement<sup>2</sup>, Stephen Mallory Clement<sup>3</sup>, Stephen Merrell Clement<sup>4</sup>,  
Norman, Edith, Merrell, Harold, Marion, Stuart<sup>5</sup>



# ELMHURST / THE HOMESTEAD

EAST AURORA, NY

Part 2



THE LAW of the STATE of NEW YORK  
Requires That

## CERTIFIED MILK

must bear the certification of a Milk Commission appointed by the County Medical Society; it must be free from preservatives, pathogenic bacteria, and bacteria in excessive numbers

All milk sold as Certified Milk must bear the Commission's Name

## Our Certified Milk

is produced at East Aurora upon S. M. Clement's farm "Elmhurst," certified by the Pure Milk Commission of the Erie County Medical Society.

A Perfect Milk for Invalids and Children

Sold in quart bottles *only* at 12 cts. per quart.

WALKER-GORDON  
LABORATORY CO.

QUEEN CITY DAIRY CO.

Highway St. and Massachusetts Ave.

Every Bottle  
is dated.  
Orders must  
be received a  
day in  
advance of  
delivery.

East Aurora Historical Society



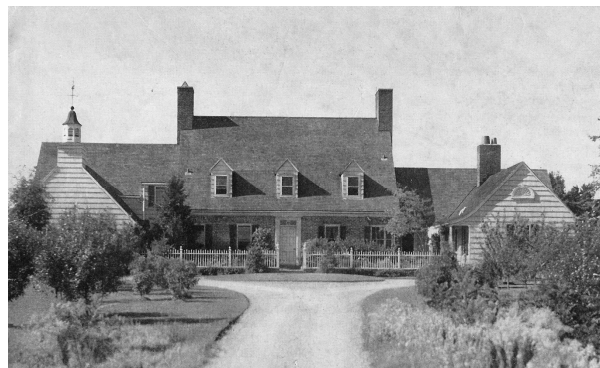
SPBC



Peter Clement

Meadowridge, Norman P. Clement house,  
East Aurora, NY, additions by  
S. Merrell Clement

Harold T. Clement house, Porterville Rd, Elma, NY  
designed by S. Merrell Clement, 1928



House Beautiful 1933

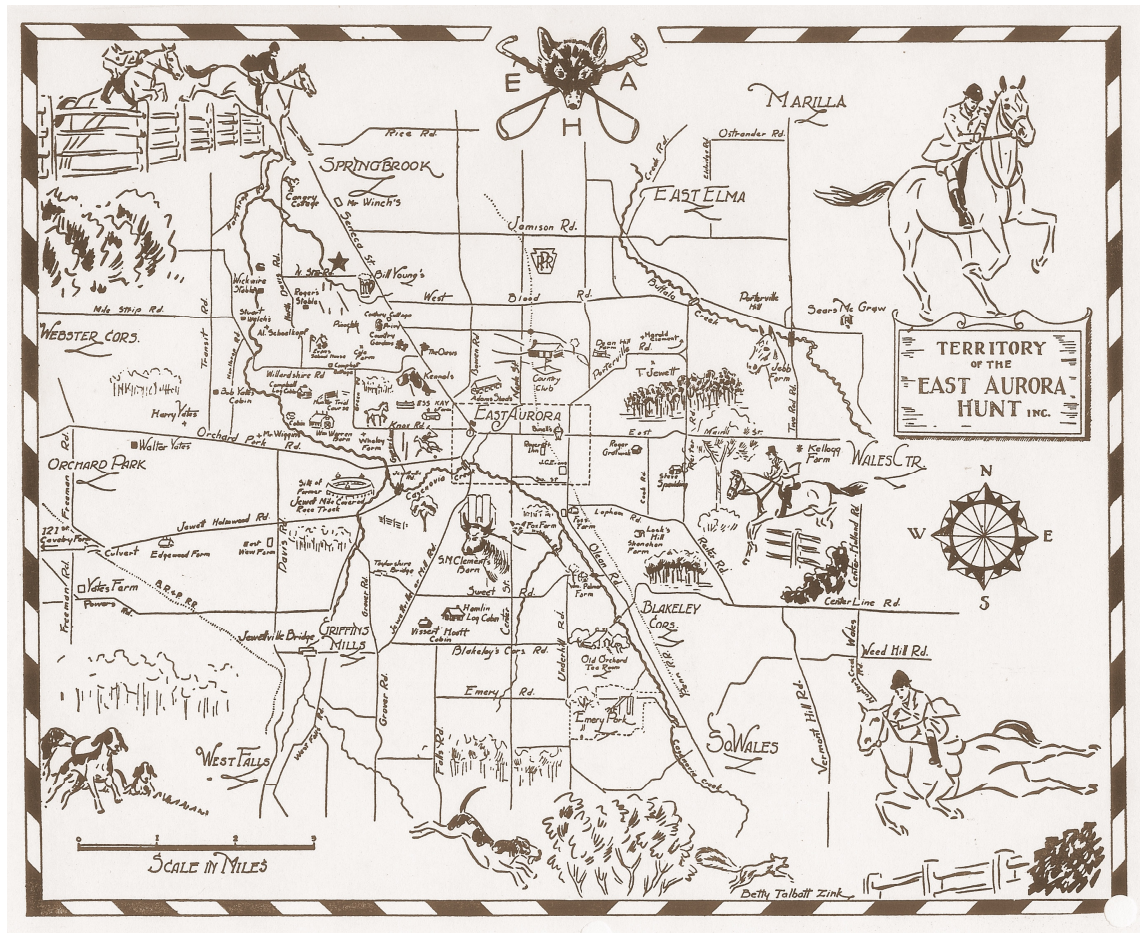
Stuart H. Clement house, Porterville Rd, Elma, NY,  
designed by S. Merrell Clement, 1930

*Stephen Clement<sup>1</sup>, Frederick Clement<sup>2</sup>, Stephen Mallory Clement<sup>3</sup>, Stephen Merrell Clement<sup>4</sup>,  
Norman, Edith, Merrell, Harold, Marion, Stuart<sup>5</sup>*

# ELMHURST / THE HOMESTEAD

## EAST AURORA, NY

### Part 2



HTC

The East Aurora Hunt map. "S.M. Clement's Barn," and ornery-looking bull, was a landmark. "Harold Clement," on Porterville Rd, is opposite "T. Jewett." Stuart Clement's house was next to the Jewett house.

*Stephen Clement<sup>1</sup>, Frederick Clement<sup>2</sup>, Stephen Mallory Clement<sup>3</sup>, Stephen Merrell Clement<sup>4</sup>,  
Norman, Edith, Merrell, Harold, Marion, Stuart<sup>5</sup>*